



[Go to Product page](#)

Datasheet for ABIN6741277
anti-DHDH antibody (AA 252-301)

1 Image

Overview

Quantity:	100 µL
Target:	DHDH
Binding Specificity:	AA 252-301
Reactivity:	Human
Host:	Rabbit
Clonality:	Polyclonal
Conjugate:	This DHDH antibody is un-conjugated
Application:	Western Blotting (WB)

Product Details

Immunogen:	Synthetic peptide located between aa252-301 of human DHDH (Q9UQ10, NP_055290). Percent identity by BLAST analysis: Human, Gorilla, Orangutan, Gibbon, Marmoset (100%), Monkey, Dog, Bovine, Pig (92%), Elephant, Horse (91%), Galago, Panda, Bat (84%). Type of Immunogen: Synthetic peptide
Isotype:	IgG
Specificity:	Human DHDH
Predicted Reactivity:	Percent identity by BLAST analysis: Human (100%) Dog, Bovine (92%) Pig (84%).
Purification:	Immunoaffinity purified

Target Details

Target:	DHDH
Alternative Name:	HUM2DD / DHDH (DHDH Products)
Background:	Name/Gene ID: DHDH Synonyms: DHDH, 3-deoxyglucosone reductase, 2DD, D-xylose-NADP dehydrogenase, D-xylose 1-dehydrogenase, HUM2DD
Gene ID:	27294
NCBI Accession:	NP_055290
UniProt:	Q9UQ10

Application Details

Application Notes:	Approved: WB (0.2 - 1 µg/mL) Usage: Western Blot: Suggested dilution at 1 µg/mL in 5 % skim milk / PBS buffer, and HRP conjugated anti-Rabbit IgG should be diluted in 1: 50,000 - 100,000 as second antibody. ELISA titer in peptide based assay: 1:1562500.
Comment:	Target Species of Antibody: Human
Restrictions:	For Research Use only

Handling

Format:	Lyophilized
Reconstitution:	Distilled water
Concentration:	Lot specific
Buffer:	Lyophilized from PBS with 2 % sucrose
Handling Advice:	Avoid repeat freeze-thaw cycles.
Storage:	4 °C,-20 °C
Storage Comment:	Long term: -20°C, the use of 50% glycerol is recommended if storing aliquots in -20°C for long term use (up to 1 year) Short term (less than 1 week): 4°C. Avoid freeze-thaw cycles.

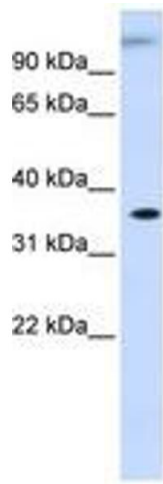


Image 1.