

Datasheet for ABIN6741280
anti-TMOD2 antibody (N-Term)



[Go to Product page](#)

1 Image

Overview

Quantity:	100 µL
Target:	TMOD2
Binding Specificity:	N-Term
Reactivity:	Human, Mouse, Rat, Cow, Dog, Guinea Pig, Horse, Zebrafish (Danio rerio), Monkey, Pig
Host:	Rabbit
Clonality:	Polyclonal
Conjugate:	This TMOD2 antibody is un-conjugated
Application:	Western Blotting (WB)

Product Details

Immunogen:	Synthetic peptide from N-Terminus of human TMOD2 (Q9NZR1, NP_055363). Percent identity by BLAST analysis: Human, Chimpanzee, Gorilla, Gibbon, Monkey, Galago, Marmoset, Mouse, Rat, Elephant, Dog, Bovine, Horse, Pig, Guinea pig (100%), Rabbit, Opossum, Turkey, Zebra finch, Chicken, Xenopus (92%), Panda, Bat, Platypus, Stickleback, Zebrafish (83%). Type of Immunogen: Synthetic peptide
Isotype:	IgG
Specificity:	Human TMOD2 / Tropomodulin 2
Predicted Reactivity:	Percent identity by BLAST analysis: Human, Mouse, Rat, Dog, Bovine, Horse, Pig (100%) Rabbit, Chicken (92%) Zebrafish (83%).
Purification:	Immunoaffinity purified

Target Details

Target:	TMOD2
Alternative Name:	TMOD2 / Tropomodulin 2 (TMOD2 Products)
Background:	Name/Gene ID: TMOD2 Synonyms: TMOD2, N-TMOD, Neuronal tropomodulin, NTMOD, Tropomodulin 2 (neuronal), Tropomodulin-2
Gene ID:	29767
NCBI Accession:	NP_055363
UniProt:	Q9NZR1
Pathways:	Regulation of G-Protein Coupled Receptor Protein Signaling

Application Details

Application Notes:	Approved: WB (0.2 - 1 µg/mL) Usage: Western Blot: Suggested dilution at 1 µg/mL in 5 % skim milk / PBS buffer, and HRP conjugated anti-Rabbit IgG should be diluted in 1: 50,000 - 100,000 as second antibody. ELISA titer in peptide based assay: 1:62500.
Comment:	Target Species of Antibody: Human
Restrictions:	For Research Use only

Handling

Format:	Lyophilized
Reconstitution:	Distilled water
Concentration:	Lot specific
Buffer:	Lyophilized from PBS with 2 % sucrose
Handling Advice:	Avoid repeat freeze-thaw cycles.
Storage:	4 °C, -20 °C
Storage Comment:	Long term: -20°C, the use of 50% glycerol is recommended if storing aliquots in -20°C for long term use (up to 1 year) Short term (less than 1 week): 4°C. Avoid freeze-thaw cycles.

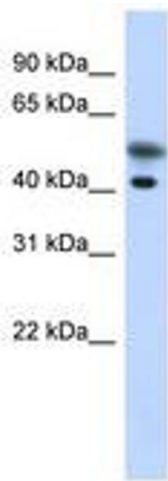


Image 1.