



Datasheet for ABIN6741282  
**anti-GSE1/KIAA0182 antibody (AA 72-121)**



[Go to Product page](#)

1 Image

Overview

Quantity:	100 µL
Target:	GSE1/KIAA0182 (GSE1)
Binding Specificity:	AA 72-121
Reactivity:	Human, Mouse, Rat, Cow, Dog, Guinea Pig, Horse, Bat, Chicken, Monkey, Pig, Xenopus laevis
Host:	Rabbit
Clonality:	Polyclonal
Conjugate:	This GSE1/KIAA0182 antibody is un-conjugated
Application:	Western Blotting (WB)

Product Details

Immunogen:	Synthetic peptide located between aa72-121 of human GSE1 (Q14687, NP_055430). Percent identity by BLAST analysis: Human, Chimpanzee, Gorilla, Marmoset, Mouse, Rat, Elephant, Dog, Bovine, Bat, Horse, Pig, Opossum, Guinea pig, Zebra finch, Chicken, Platypus, Xenopus (100%), Zebrafish (92%).  Type of Immunogen: Synthetic peptide
Isotype:	IgG
Specificity:	Human KIAA0182
Predicted Reactivity:	Percent identity by BLAST analysis: Dog, Bovine, Horse, Pig, Guinea pig, Chicken, Xenopus (100%).
Purification:	Immunoaffinity purified

## Target Details

---

Target:	GSE1/KIAA0182 (GSE1)
Alternative Name:	GSE1 / KIAA0182 ( <a href="#">GSE1 Products</a> )
Background:	Name/Gene ID: GSE1  Synonyms: GSE1, Gse1 coiled-coil protein, KIAA0182
Gene ID:	23199
NCBI Accession:	<a href="#">NP_055430</a>
UniProt:	<a href="#">Q14687</a>

## Application Details

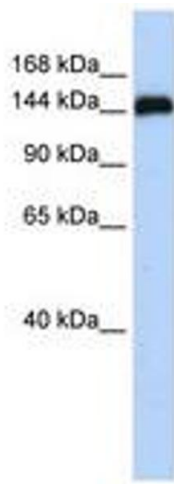
---

Application Notes:	Approved: WB (0.2 - 1 µg/mL)  Usage: Western Blot: Suggested dilution at 1 µg/mL in 5 % skim milk / PBS buffer, and HRP conjugated anti-Rabbit IgG should be diluted in 1: 50,000 - 100,000 as second antibody. ELISA titer in peptide based assay: 1:312500.
Comment:	Target Species of Antibody: Human
Restrictions:	For Research Use only

## Handling

---

Format:	Lyophilized
Reconstitution:	Distilled water
Concentration:	Lot specific
Buffer:	Lyophilized from PBS with 2 % sucrose
Handling Advice:	Avoid repeat freeze-thaw cycles.
Storage:	4 °C, -20 °C
Storage Comment:	Long term: -20°C, the use of 50% glycerol is recommended if storing aliquots in -20°C for long term use (up to 1 year)  Short term (less than 1 week): 4°C. Avoid freeze-thaw cycles.



**Image 1.**