



Datasheet for ABIN6741289
anti-FBX028 antibody (AA 288-337)



[Go to Product page](#)

1 Image

Overview

Quantity:	100 µL
Target:	FBX028
Binding Specificity:	AA 288-337
Reactivity:	Human, Mouse, Rat, Rabbit, Cow, Dog, Horse, Guinea Pig, Pig, Monkey, Xenopus laevis, Bat, Chicken
Host:	Rabbit
Clonality:	Polyclonal
Conjugate:	This FBX028 antibody is un-conjugated
Application:	Western Blotting (WB)

Product Details

Immunogen:	Synthetic peptide located between aa288-337 of human FBX028 (Q9NVF7, NP_055991). Percent identity by BLAST analysis: Human, Chimpanzee, Gorilla, Gibbon, Monkey, Galago, Marmoset, Mouse, Rat, Elephant, Dog, Bovine, Bat, Rabbit, Horse, Pig, Opossum, Guinea pig, Turkey, Zebra finch, Chicken, Platypus, Xenopus (100%), Stickleback (90%). Type of Immunogen: Synthetic peptide
Isotype:	IgG
Specificity:	Human FBX028
Predicted Reactivity:	Percent identity by BLAST analysis: Mouse, Rat, Dog, Horse, Chicken, Xenopus (100%).
Purification:	Immunoaffinity purified

Target Details

Target:	FBXO28
Alternative Name:	FBXO28 (FBXO28 Products)
Background:	Name/Gene ID: FBXO28 Family: F-Box Synonyms: FBXO28, CENP-30, F-box only protein 28, F-box protein 28, Fbx28, KIAA0483, Centromere protein 30
Gene ID:	23219
NCBI Accession:	NP_055991
UniProt:	Q9NVF7

Application Details

Application Notes:	Approved: WB (0.2 - 1 µg/mL) Usage: Western Blot: Suggested dilution at 1 µg/mL in 5 % skim milk / PBS buffer, and HRP conjugated anti-Rabbit IgG should be diluted in 1: 50,000 - 100,000 as second antibody. ELISA titer in peptide based assay: 1:312500.
Comment:	Target Species of Antibody: Human
Restrictions:	For Research Use only

Handling

Format:	Lyophilized
Reconstitution:	Distilled water
Concentration:	Lot specific
Buffer:	Lyophilized from PBS with 2 % sucrose
Handling Advice:	Avoid repeat freeze-thaw cycles.
Storage:	4 °C, -20 °C
Storage Comment:	Long term: -20°C, the use of 50% glycerol is recommended if storing aliquots in -20°C for long term use (up to 1 year) Short term (less than 1 week): 4°C. Avoid freeze-thaw cycles.

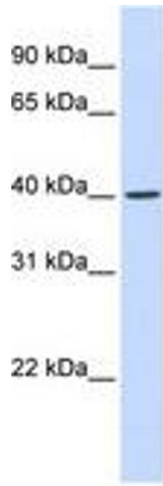


Image 1.