

Datasheet for ABIN6741300
anti-FAM98A antibody (AA 432-481)[Go to Product page](#)

1 Image

Overview

Quantity:	100 µL
Target:	FAM98A
Binding Specificity:	AA 432-481
Reactivity:	Human, Mouse, Rat, Cow, Dog, Horse, Rabbit, Guinea Pig, Bat, Monkey
Host:	Rabbit
Clonality:	Polyclonal
Conjugate:	This FAM98A antibody is un-conjugated
Application:	Western Blotting (WB)

Product Details

Immunogen:	Synthetic peptide located between aa432-481 of human FAM98A (B2RNA2, NP_056290). Percent identity by BLAST analysis: Human, Gorilla, Orangutan, Gibbon, Monkey, Galago, Marmoset, Mouse, Rat, Panda, Dog, Bovine, Bat, Rabbit, Horse, Guinea pig, Platypus, Lizard (100%), Opossum (93%), Chimpanzee, Elephant, Pig, Turkey, Zebra finch, Chicken (92%). Type of Immunogen: Synthetic peptide
Isotype:	IgG
Specificity:	Human FAM98A
Predicted Reactivity:	Percent identity by BLAST analysis: Human, Mouse, Dog, Bovine, Rabbit, Horse (100%) Chicken (92%).
Purification:	Immunoaffinity purified

Target Details

Target:	FAM98A
Alternative Name:	FAM98A (FAM98A Products)
Background:	Name/Gene ID: FAM98A Synonyms: FAM98A, DKFZP564F0522, Protein FAM98A
Gene ID:	25940
NCBI Accession:	NP_056290
UniProt:	Q8NCA5
Pathways:	SARS-CoV-2 Protein Interactome

Application Details

Application Notes:	Approved: WB (0.2 - 1 µg/mL) Usage: Western Blot: Suggested dilution at 1 µg/mL in 5 % skim milk / PBS buffer, and HRP conjugated anti-Rabbit IgG should be diluted in 1: 50,000 - 100,000 as second antibody. ELISA titer in peptide based assay: 1:62500.
Comment:	Target Species of Antibody: Human
Restrictions:	For Research Use only

Handling

Format:	Lyophilized
Reconstitution:	Distilled water
Concentration:	Lot specific
Buffer:	Lyophilized from PBS with 2 % sucrose
Handling Advice:	Avoid repeat freeze-thaw cycles.
Storage:	4 °C,-20 °C
Storage Comment:	Long term: -20°C, the use of 50% glycerol is recommended if storing aliquots in -20°C for long term use (up to 1 year) Short term (less than 1 week): 4°C. Avoid freeze-thaw cycles.

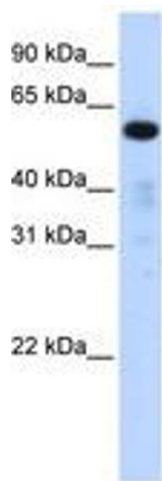


Image 1.