

Datasheet for ABIN6741301
anti-TPGS2 antibody (AA 108-157)



[Go to Product page](#)

1 Image

Overview

Quantity:	100 µL
Target:	TPGS2 (C18orf10)
Binding Specificity:	AA 108-157
Reactivity:	Human, Mouse, Rat, Rabbit, Cow, Dog, Horse, Bat, Monkey
Host:	Rabbit
Clonality:	Polyclonal
Conjugate:	This TPGS2 antibody is un-conjugated
Application:	Western Blotting (WB)

Product Details

Immunogen:	Synthetic peptide located between aa108-157 of human TPGS2 (Q68CL5, NP_056291). Percent identity by BLAST analysis: Human, Chimpanzee, Gorilla, Orangutan, Gibbon, Monkey, Galago, Marmoset, Mouse, Rat, Elephant, Panda, Dog, Bovine, Bat, Rabbit, Horse (100%), Guinea pig, Zebra finch, Chicken, Platypus, Xenopus (92%), Zebrafish (85%). Type of Immunogen: Synthetic peptide
Isotype:	IgG
Specificity:	Human C18orf10
Predicted Reactivity:	Percent identity by BLAST analysis: Rabbit (100%).
Purification:	Immunoaffinity purified

Target Details

Target:	TPGS2 (C18orf10)
Alternative Name:	TPGS2 / C18orf10 (C18orf10 Products)
Background:	Name/Gene ID: TPGS2 Synonyms: TPGS2, DKFZP586M1523, HsT3006, HMFN0601, L17, PGS2, C18orf10
Gene ID:	25941
NCBI Accession:	NP_056291
UniProt:	Q68CL5

Application Details

Application Notes:	Approved: WB (0.2 - 1 µg/mL) Usage: Western Blot: Suggested dilution at 1 µg/mL in 5 % skim milk / PBS buffer, and HRP conjugated anti-Rabbit IgG should be diluted in 1: 50,000 - 100,000 as second antibody. ELISA titer in peptide based assay: 1:62500.
Comment:	Target Species of Antibody: Human
Restrictions:	For Research Use only

Handling

Format:	Lyophilized
Reconstitution:	Distilled water
Concentration:	Lot specific
Buffer:	Lyophilized from PBS with 2 % sucrose
Handling Advice:	Avoid repeat freeze-thaw cycles.
Storage:	4 °C, -20 °C
Storage Comment:	Long term: -20°C, the use of 50% glycerol is recommended if storing aliquots in -20°C for long term use (up to 1 year) Short term (less than 1 week): 4°C. Avoid freeze-thaw cycles.

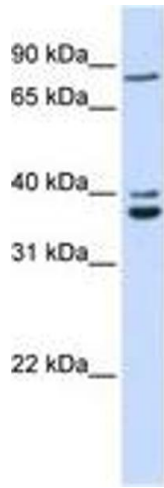


Image 1.