



Datasheet for ABIN6741306
anti-CCDC69 antibody (C-Term)



[Go to Product page](#)

1 Image

Overview

Quantity:	100 µL
Target:	CCDC69
Binding Specificity:	C-Term
Reactivity:	Human, Cow, Guinea Pig, Monkey, Rabbit
Host:	Rabbit
Clonality:	Polyclonal
Conjugate:	This CCDC69 antibody is un-conjugated
Application:	Western Blotting (WB)

Product Details

Immunogen:	Synthetic peptide from C-Terminus of human CCDC69 (A6NI79, NP_056436). Percent identity by BLAST analysis: Human, Chimpanzee, Gorilla, Gibbon, Monkey (100%), Galago, Panda, Dog, Bat, Horse, Pig (92%), Marmoset, Bovine, Rabbit (85%). Type of Immunogen: Synthetic peptide
Isotype:	IgG
Specificity:	Human CCDC69
Predicted Reactivity:	Percent identity by BLAST analysis: Human (100%) Dog, Horse (92%) Bovine, Rabbit (85%).
Purification:	Immunoaffinity purified

Target Details

Target:	CCDC69
Alternative Name:	CCDC69 (CCDC69 Products)
Background:	Name/Gene ID: CCDC69 Synonyms: CCDC69, DKFZP434C171
Gene ID:	26112
NCBI Accession:	NP_056436
UniProt:	A6NI79

Application Details

Application Notes:	Approved: WB (0.2 - 1 µg/mL) Usage: Western Blot: Suggested dilution at 1 µg/mL in 5 % skim milk / PBS buffer, and HRP conjugated anti-Rabbit IgG should be diluted in 1: 50,000 - 100,000 as second antibody. ELISA titer in peptide based assay: 1:1562500.
Comment:	Target Species of Antibody: Human
Restrictions:	For Research Use only

Handling

Format:	Lyophilized
Reconstitution:	Distilled water
Concentration:	Lot specific
Buffer:	Lyophilized from PBS with 2 % sucrose
Handling Advice:	Avoid repeat freeze-thaw cycles.
Storage:	4 °C, -20 °C
Storage Comment:	Long term: -20°C, the use of 50% glycerol is recommended if storing aliquots in -20°C for long term use (up to 1 year) Short term (less than 1 week): 4°C. Avoid freeze-thaw cycles.

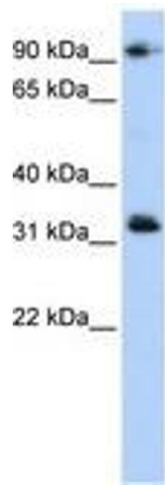


Image 1.