

Datasheet for ABIN6741309 anti-MMADHC antibody (AA 216-265)



[Go to Product page](#)

1 Image

Overview

Quantity:	100 µL
Target:	MMADHC
Binding Specificity:	AA 216-265
Reactivity:	Human, Mouse, Rat, Cow, Dog, Goat, Guinea Pig, Horse, Rabbit, Chicken, Hamster, Monkey, Xenopus laevis, Pig
Host:	Rabbit
Clonality:	Polyclonal
Conjugate:	This MMADHC antibody is un-conjugated
Application:	Western Blotting (WB)

Product Details

Immunogen:	Synthetic peptide located between aa216-265 of human MMADHC (Q9H3L0, NP_056517). Percent identity by BLAST analysis: Human, Chimpanzee, Gorilla, Gibbon, Monkey, Galago, Marmoset, Mouse, Rat, Goat, Hamster, Elephant, Dog, Bovine, Rabbit, Horse, Pig, Guinea pig, Turkey, Chicken, Xenopus, Trout, Catfish (100%), Bat, Opossum, Platypus, Zebrafish (92%). Type of Immunogen: Synthetic peptide
Isotype:	IgG
Specificity:	Human MMADHC / C2orf25
Predicted Reactivity:	Percent identity by BLAST analysis: Human, Monkey, Mouse, Rat, Dog, Bovine, Goat, Chicken, Xenopus, Trout, Catfish (100%) Pufferfish, Zebrafish (92%) Tick (85%) Trichoplax (84%).

Product Details

Purification: Immunoaffinity purified

Target Details

Target: MMADHC

Alternative Name: MMADHC / C2orf25 ([MMADHC Products](#))

Background: Name/Gene ID: MMADHC

Synonyms: MMADHC, C2orf25, CbID, CL25022, Protein C2orf25, mitochondrial

Gene ID: 27249

NCBI Accession: [NP_056517](#)

UniProt: [Q9H3L0](#)

Application Details

Application Notes: Approved: WB (0.2 - 1 µg/mL)

Usage: Western Blot: Suggested dilution at 1 µg/mL in 5 % skim milk / PBS buffer, and HRP conjugated anti-Rabbit IgG should be diluted in 1: 50,000 - 100,000 as second antibody. ELISA titer in peptide based assay: 1:62500.

Comment: Target Species of Antibody: Human

Restrictions: For Research Use only

Handling

Format: Lyophilized

Reconstitution: Distilled water

Concentration: Lot specific

Buffer: Lyophilized from PBS with 2 % sucrose

Handling Advice: Avoid repeat freeze-thaw cycles.

Storage: 4 °C, -20 °C

Storage Comment: Long term: -20°C, the use of 50% glycerol is recommended if storing aliquots in -20°C for long term use (up to 1 year)

Handling

Short term (less than 1 week): 4°C. Avoid freeze-thaw cycles.

Images

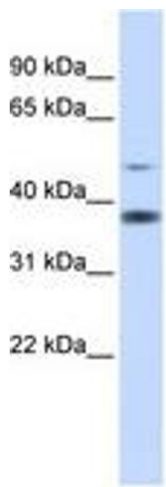


Image 1.