



[Go to Product page](#)

Datasheet for ABIN6741317

anti-TSPY-Like 4 antibody (AA 180-229)

1 Image

Overview

Quantity:	100 µL
Target:	TSPY-Like 4 (TSPYL4)
Binding Specificity:	AA 180-229
Reactivity:	Human, Mouse, Rat, Pig, Rabbit, Cow, Dog, Horse, Hamster, Monkey
Host:	Rabbit
Clonality:	Polyclonal
Conjugate:	This TSPY-Like 4 antibody is un-conjugated
Application:	Western Blotting (WB)

Product Details

Immunogen:	Synthetic peptide located between aa180-229 of human TSPYL4 (Q9UJ04, NP_067680). Percent identity by BLAST analysis: Human, Chimpanzee, Gorilla, Monkey, Galago, Marmoset, Mouse, Rat, Hamster, Elephant, Panda, Dog, Bovine, Rabbit, Horse, Pig (100%), Bat (92%). Type of Immunogen: Synthetic peptide
Isotype:	IgG
Specificity:	Human TSPYL4
Predicted Reactivity:	Percent identity by BLAST analysis: Human, Mouse, Rat, Dog, Bovine, Rabbit (100%).
Purification:	Immunoaffinity purified

Target Details

Target: TSPY-Like 4 (TSPYL4)

Alternative Name: TSPYL4 ([TSPYL4 Products](#))

Background: Name/Gene ID: TSPYL4

Synonyms: TSPYL4, DJ486I3.2, TSPY-like protein 4, KIAA0721, TSPY-like 4

Gene ID: 23270

NCBI Accession: [NP_067680](#)

UniProt: [Q9UJ04](#)

Application Details

Application Notes: Approved: WB (0.2 - 1 µg/mL)

Usage: Western Blot: Suggested dilution at 1 µg/mL in 5 % skim milk / PBS buffer, and HRP conjugated anti-Rabbit IgG should be diluted in 1: 50,000 - 100,000 as second antibody. ELISA titer in peptide based assay: 1:62500.

Comment: Target Species of Antibody: Human

Restrictions: For Research Use only

Handling

Format: Lyophilized

Reconstitution: Distilled water

Concentration: Lot specific

Buffer: Lyophilized from PBS with 2 % sucrose

Handling Advice: Avoid repeat freeze-thaw cycles.

Storage: 4 °C, -20 °C

Storage Comment: Long term: -20°C, the use of 50% glycerol is recommended if storing aliquots in -20°C for long term use (up to 1 year)

Short term (less than 1 week): 4°C. Avoid freeze-thaw cycles.

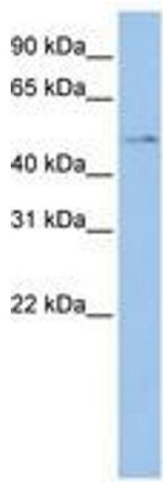


Image 1.