

Datasheet for ABIN6741324  
**anti-FGF13 antibody (AA 71-120)**



[Go to Product page](#)

1 Image

## Overview

Quantity:	100 µL
Target:	FGF13
Binding Specificity:	AA 71-120
Reactivity:	Human, Rat, Mouse, Cow, Dog, Rabbit, Guinea Pig, Horse, Monkey, Bat
Host:	Rabbit
Clonality:	Polyclonal
Conjugate:	This FGF13 antibody is un-conjugated
Application:	Western Blotting (WB)

## Product Details

Immunogen:	Synthetic peptide located between aa71-120 of human FGF13 (Q92913, NP_004105). Percent identity by BLAST analysis: Human, Chimpanzee, Gorilla, Orangutan, Gibbon, Monkey, Marmoset, Mouse, Rat, Elephant, Dog, Bovine, Bat, Rabbit, Horse, Guinea pig (100%), Galago, Turkey, Zebra finch, Chicken, Platypus, Salmon, Stickleback, Zebrafish (92%), Sheep, Panda, Opossum, Xenopus (91%).  Type of Immunogen: Synthetic peptide
Isotype:	IgG
Specificity:	Human FGF13
Predicted Reactivity:	Percent identity by BLAST analysis: Human, Mouse, Rat, Dog, Bovine, Rabbit, Horse (100%) Chicken, Zebrafish (92%).

## Product Details

Purification: Immunoaffinity purified

## Target Details

Target: FGF13

Alternative Name: FGF13 ([FGF13 Products](#))

Background: Name/Gene ID: FGF13  
Family: HBGF

Synonyms: FGF13, FHF-2, FHF2, Fibroblast growth factor 13, FGF-13

Gene ID: 2258

NCBI Accession: [NP\\_004105](#)

UniProt: [Q92913](#)

Pathways: [Regulation of Cell Size](#)

## Application Details

Application Notes: Approved: WB (0.2 - 1 µg/mL)

Usage: Western Blot: Suggested dilution at 1 µg/mL in 5 % skim milk / PBS buffer, and HRP conjugated anti-Rabbit IgG should be diluted in 1: 50,000 - 100,000 as second antibody. ELISA titer in peptide based assay: 1:62500.

Not recommended for: IHC-P

Comment: Target Species of Antibody: Human

Restrictions: For Research Use only

## Handling

Format: Lyophilized

Reconstitution: Distilled water

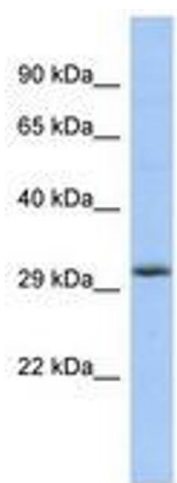
Concentration: Lot specific

Buffer: Lyophilized from PBS with 2 % sucrose

## Handling

Handling Advice:	Avoid repeat freeze-thaw cycles.
Storage:	4 °C,-20 °C
Storage Comment:	Long term: -20°C, the use of 50% glycerol is recommended if storing aliquots in -20°C for long term use (up to 1 year) Short term (less than 1 week): 4°C. Avoid freeze-thaw cycles.

## Images



**Image 1.**