

Datasheet for ABIN6741336

**anti-Sphingomyelin Synthase 1 antibody (AA 144-193)**[Go to Product page](#)**1** Image

## Overview

Quantity:	100 µL
Target:	Sphingomyelin Synthase 1 (SGMS1)
Binding Specificity:	AA 144-193
Reactivity:	Human, Mouse, Rat, Horse, Rabbit, Cow, Dog, Guinea Pig, Bat, Monkey, Pig
Host:	Rabbit
Clonality:	Polyclonal
Conjugate:	This Sphingomyelin Synthase 1 antibody is un-conjugated
Application:	Western Blotting (WB)

## Product Details

Immunogen:	Synthetic peptide located between aa144-193 of human SGMS1 (Q86VZ5, NP_671512). Percent identity by BLAST analysis: Human, Chimpanzee, Gorilla, Gibbon, Monkey, Galago, Marmoset, Mouse, Rat, Elephant, Dog, Bovine, Bat, Rabbit, Horse, Pig, Guinea pig, Platypus (100%), Turkey, Zebra finch, Chicken (92%), Opossum, Xenopus (84%).  Type of Immunogen: Synthetic peptide
Isotype:	IgG
Specificity:	Human SGMS1
Predicted Reactivity:	Percent identity by BLAST analysis: Human, Mouse, Rat, Dog, Bovine, Horse, Pig, Guinea pig (100%) Chicken (92%).
Purification:	Immunoaffinity purified

## Target Details

Target:	Sphingomyelin Synthase 1 (SGMS1)
Alternative Name:	SGMS1 / TMEM23 ( <a href="#">SGMS1 Products</a> )
Background:	Name/Gene ID: SGMS1  Synonyms: SGMS1, Hmob33, MOB, MOB1, Sphingomyelin synthase 1, TMEM23, Transmembrane protein 23, Protein Mob, SMS1
Gene ID:	259230
NCBI Accession:	<a href="#">NP_671512</a>
UniProt:	<a href="#">Q86VZ5</a>
Pathways:	<a href="#">Cellular Response to Molecule of Bacterial Origin</a>

## Application Details

Application Notes:	Approved: WB (0.2 - 1 µg/mL)  Usage: Western Blot: Suggested dilution at 1 µg/mL in 5 % skim milk / PBS buffer, and HRP conjugated anti-Rabbit IgG should be diluted in 1: 50,000 - 100,000 as second antibody. ELISA titer in peptide based assay: 1:62500.  Not recommended for: IHC-P
Comment:	Target Species of Antibody: Human
Restrictions:	For Research Use only

## Handling

Format:	Lyophilized
Reconstitution:	Distilled water
Concentration:	Lot specific
Buffer:	Lyophilized from PBS with 2 % sucrose
Handling Advice:	Avoid repeat freeze-thaw cycles.
Storage:	4 °C,-20 °C
Storage Comment:	Long term: -20°C, the use of 50% glycerol is recommended if storing aliquots in -20°C for long

Handling

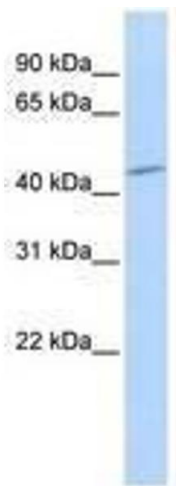
---

term use (up to 1 year)

Short term (less than 1 week): 4°C. Avoid freeze-thaw cycles.

Images

---



**Image 1.**