



[Go to Product page](#)

Datasheet for ABIN6741342
anti-C7orf62 antibody (AA 35-84)

1 Image

Overview

Quantity:	100 µL
Target:	C7orf62
Binding Specificity:	AA 35-84
Reactivity:	Human, Cow
Host:	Rabbit
Clonality:	Polyclonal
Conjugate:	This C7orf62 antibody is un-conjugated
Application:	Western Blotting (WB)

Product Details

Immunogen:	Synthetic peptide located between aa35-84 of human C7orf62 (Q8TBZ9, NP_689919). Percent identity by BLAST analysis: Human, Gorilla, Gibbon (100%), Monkey (85%). Type of Immunogen: Synthetic peptide
Isotype:	IgG
Specificity:	Human C7orf62
Predicted Reactivity:	Percent identity by BLAST analysis: Human, Mosquito (100%).
Purification:	Immunoaffinity purified

Target Details

Target:	C7orf62
---------	---------

Target Details

Alternative Name: C7orf62 ([C7orf62 Products](#))

Background: Name/Gene ID: C7orf62

Synonyms: C7orf62

Gene ID: 219557

NCBI Accession: [NP_689919](#)

UniProt: [Q8TBZ9](#)

Application Details

Application Notes: Approved: WB (0.2 - 1 µg/mL)

Usage: Western Blot: Suggested dilution at 1 µg/mL in 5 % skim milk / PBS buffer, and HRP conjugated anti-Rabbit IgG should be diluted in 1: 50,000 - 100,000 as second antibody. ELISA titer in peptide based assay: 1:312500.

Comment: Target Species of Antibody: Human

Restrictions: For Research Use only

Handling

Format: Lyophilized

Reconstitution: Distilled water

Concentration: Lot specific

Buffer: Lyophilized from PBS with 2 % sucrose

Handling Advice: Avoid repeat freeze-thaw cycles.

Storage: 4 °C, -20 °C

Storage Comment: Long term: -20°C, the use of 50% glycerol is recommended if storing aliquots in -20°C for long term use (up to 1 year)

Short term (less than 1 week): 4°C. Avoid freeze-thaw cycles.

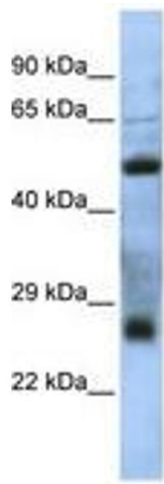


Image 1.