



[Go to Product page](#)

Datasheet for ABIN6741351
anti-PXT1 antibody (C-Term)

1 Image

Overview

Quantity:	100 µL
Target:	PXT1
Binding Specificity:	C-Term
Reactivity:	Human, Monkey
Host:	Rabbit
Clonality:	Polyclonal
Conjugate:	This PXT1 antibody is un-conjugated
Application:	Western Blotting (WB)

Product Details

Immunogen:	Synthetic peptide from C-Terminus of human PXT1 (Q8NFP0, NP_694535). Percent identity by BLAST analysis: Human, Chimpanzee, Gorilla, Gibbon, Marmoset (100%), Horse (92%). Type of Immunogen: Synthetic peptide
Isotype:	IgG
Specificity:	Human PXT1
Predicted Reactivity:	Percent identity by BLAST analysis: Human (100%) Horse (92%).
Purification:	Immunoaffinity purified

Target Details

Target:	PXT1
---------	------

Target Details

Alternative Name: PXT1 ([PXT1 Products](#))

Background: Name/Gene ID: PXT1

Synonyms: PXT1, Peroxisomal, testis specific 1, STEPP

Gene ID: 222659

NCBI Accession: [NP_694535](#)

UniProt: [Q8NFP0](#)

Application Details

Application Notes: Approved: WB (0.2 - 1 µg/mL)

Usage: Western Blot: Suggested dilution at 1 µg/mL in 5 % skim milk / PBS buffer, and HRP conjugated anti-Rabbit IgG should be diluted in 1: 50,000 - 100,000 as second antibody. ELISA titer in peptide based assay: 1:312500.

Comment: Target Species of Antibody: Human

Restrictions: For Research Use only

Handling

Format: Lyophilized

Reconstitution: Distilled water

Concentration: Lot specific

Buffer: Lyophilized from PBS with 2 % sucrose

Handling Advice: Avoid repeat freeze-thaw cycles.

Storage: 4 °C, -20 °C

Storage Comment: Long term: -20°C, the use of 50% glycerol is recommended if storing aliquots in -20°C for long term use (up to 1 year)

Short term (less than 1 week): 4°C. Avoid freeze-thaw cycles.

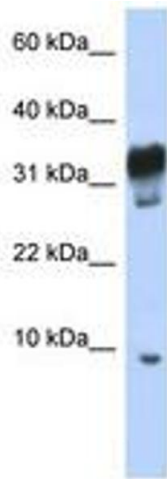


Image 1.