

Datasheet for ABIN6741354
anti-LRRC57 antibody (AA 71-120)[Go to Product page](#)

1 Image

Overview

Quantity:	100 µL
Target:	LRRC57
Binding Specificity:	AA 71-120
Reactivity:	Human, Mouse, Dog, Guinea Pig, Horse, Pig, Bat, Monkey
Host:	Rabbit
Clonality:	Polyclonal
Conjugate:	This LRRC57 antibody is un-conjugated
Application:	Western Blotting (WB)

Product Details

Immunogen:	Synthetic peptide located between aa71-120 of human LRRC57 (Q8N9N7, NP_694992). Percent identity by BLAST analysis: Human, Chimpanzee, Gorilla, Gibbon, Monkey, Galago, Mouse, Panda, Dog, Bat, Horse, Pig (100%), Rat, Elephant, Bovine, Rabbit (92%), Guinea pig (85%). Type of Immunogen: Synthetic peptide
Isotype:	IgG
Specificity:	Human LRRC57
Predicted Reactivity:	Percent identity by BLAST analysis: Mouse, Dog, Horse, Pig (100%) Rat, Bovine, Rabbit (92%) Guinea pig (85%).
Purification:	Immunoaffinity purified

Target Details

Target:	LRRC57
Alternative Name:	LRRC57 (LRRC57 Products)
Background:	Name/Gene ID: LRRC57 Synonyms: LRRC57
Gene ID:	255252
NCBI Accession:	NP_694992

Application Details

Application Notes:	Approved: WB (0.2 - 1 µg/mL) Usage: Western Blot: Suggested dilution at 1 µg/mL in 5 % skim milk / PBS buffer, and HRP conjugated anti-Rabbit IgG should be diluted in 1: 50,000 - 100,000 as second antibody. ELISA titer in peptide based assay: 1:312500.
Comment:	Target Species of Antibody: Human
Restrictions:	For Research Use only

Handling

Format:	Lyophilized
Reconstitution:	Distilled water
Concentration:	Lot specific
Buffer:	Lyophilized from PBS with 2 % sucrose
Handling Advice:	Avoid repeat freeze-thaw cycles.
Storage:	4 °C, -20 °C
Storage Comment:	Long term: -20°C, the use of 50% glycerol is recommended if storing aliquots in -20°C for long term use (up to 1 year) Short term (less than 1 week): 4°C. Avoid freeze-thaw cycles.

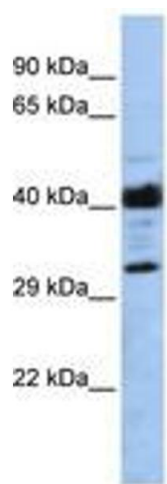


Image 1.