



Datasheet for ABIN6741357
anti-ZCCHC24 antibody (AA 108-157)



[Go to Product page](#)

1 Image

Overview

Quantity:	100 µL
Target:	ZCCHC24
Binding Specificity:	AA 108-157
Reactivity:	Human, Mouse, Rat, Guinea Pig, Rabbit, Chicken, Monkey
Host:	Rabbit
Clonality:	Polyclonal
Conjugate:	This ZCCHC24 antibody is un-conjugated
Application:	Western Blotting (WB)

Product Details

Immunogen:	Synthetic peptide located between aa108-157 of human ZCCHC24 (Q8N2G6, NP_699198). Percent identity by BLAST analysis: Human, Chimpanzee, Gorilla, Gibbon, Monkey, Galago, Mouse, Rat, Elephant, Rabbit, Opossum, Guinea pig, Zebra finch, Chicken (100%), Panda, Dog, Bovine, Bat, Horse, Xenopus, Zebrafish (92%), Seabass (91%). Type of Immunogen: Synthetic peptide
Isotype:	IgG
Specificity:	Human ZCCHC24
Predicted Reactivity:	Percent identity by BLAST analysis: Human, Monkey, Mouse, Rat, Chicken (100%) Bovine, Zebrafish (92%).
Purification:	Immunoaffinity purified

Target Details

Target:	ZCCHC24
Alternative Name:	ZCCHC24 (ZCCHC24 Products)
Background:	Name/Gene ID: ZCCHC24 Synonyms: ZCCHC24, C10orf56
Gene ID:	219654
NCBI Accession:	NP_699198
UniProt:	Q8N2G6

Application Details

Application Notes:	Approved: WB (0.2 - 1 µg/mL) Usage: Western Blot: Suggested dilution at 1 µg/mL in 5 % skim milk / PBS buffer, and HRP conjugated anti-Rabbit IgG should be diluted in 1: 50,000 - 100,000 as second antibody. ELISA titer in peptide based assay: 1:1562500.
Comment:	Target Species of Antibody: Human
Restrictions:	For Research Use only

Handling

Format:	Lyophilized
Reconstitution:	Distilled water
Concentration:	Lot specific
Buffer:	Lyophilized from PBS with 2 % sucrose
Handling Advice:	Avoid repeat freeze-thaw cycles.
Storage:	4 °C, -20 °C
Storage Comment:	Long term: -20°C, the use of 50% glycerol is recommended if storing aliquots in -20°C for long term use (up to 1 year) Short term (less than 1 week): 4°C. Avoid freeze-thaw cycles.

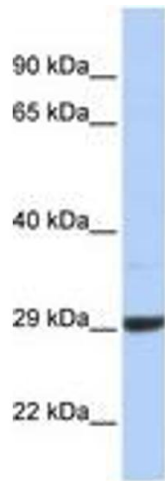


Image 1.