



Datasheet for ABIN6741367  
**anti-C14ORF80 antibody (AA 195-228)**



[Go to Product page](#)

1 Image

Overview

Quantity:	100 µL
Target:	C14ORF80
Binding Specificity:	AA 195-228
Reactivity:	Human, Cow, Guinea Pig, Horse
Host:	Rabbit
Clonality:	Polyclonal
Conjugate:	This C14ORF80 antibody is un-conjugated
Application:	Western Blotting (WB)

Product Details

Immunogen:	Synthetic peptide located between aa195-228 of human C14orf80 (Q86SX3). Percent identity by BLAST analysis: Human, Gorilla (100%), Gibbon, Marmoset (92%), Monkey, Horse (85%).  Type of Immunogen: Synthetic peptide
Isotype:	IgG
Specificity:	Human C14orf80
Predicted Reactivity:	Percent identity by BLAST analysis: Human (100%) Horse (85%).
Purification:	Immunoaffinity purified

Target Details

Target:	C14ORF80
---------	----------

## Target Details

---

Alternative Name: C14orf80 ([C14ORF80 Products](#))

---

Background: Name/Gene ID: C14orf80

Synonyms: C14orf80

---

Gene ID: 283643

---

UniProt: [Q86SX3](#)

## Application Details

---

Application Notes: Approved: WB (0.2 - 1 µg/mL)

Usage: Western Blot: Suggested dilution at 1 µg/mL in 5 % skim milk / PBS buffer, and HRP conjugated anti-Rabbit IgG should be diluted in 1: 50,000 - 100,000 as second antibody. ELISA titer in peptide based assay: 1:1562500.

---

Comment: Target Species of Antibody: Human

---

Restrictions: For Research Use only

## Handling

---

Format: Lyophilized

---

Reconstitution: Distilled water

---

Concentration: Lot specific

---

Buffer: Lyophilized from PBS with 2 % sucrose

---

Handling Advice: Avoid repeat freeze-thaw cycles.

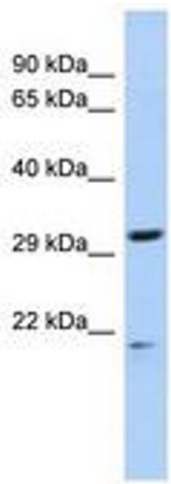
---

Storage: 4 °C, -20 °C

---

Storage Comment: Long term: -20°C, the use of 50% glycerol is recommended if storing aliquots in -20°C for long term use (up to 1 year)

Short term (less than 1 week): 4°C. Avoid freeze-thaw cycles.



**Image 1.**