



Datasheet for ABIN6741371
anti-COX18 antibody (C-Term)



[Go to Product page](#)

1 Image

Overview

Quantity:	100 µL
Target:	COX18
Binding Specificity:	C-Term
Reactivity:	Human, Mouse, Rat, Cow, Dog, Pig, Monkey
Host:	Rabbit
Clonality:	Polyclonal
Conjugate:	This COX18 antibody is un-conjugated
Application:	Western Blotting (WB)

Product Details

Immunogen:	Synthetic peptide from C-Terminus of human COX18 (Q8N8Q8, NP_776188). Percent identity by BLAST analysis: Human, Chimpanzee, Gorilla, Orangutan, Gibbon, Monkey, Marmoset (100%), Galago (92%), Elephant, Panda, Rabbit, Horse, Pig (85%), Mouse, Lizard (84%), Turkey, Chicken (83%), Rat (76%). Type of Immunogen: Synthetic peptide
Isotype:	IgG
Specificity:	Human COX18
Predicted Reactivity:	Percent identity by BLAST analysis: Human (100%) Pig (85%) Mouse (84%) Chicken (83%).
Purification:	Immunoaffinity purified

Target Details

Target:	COX18
Alternative Name:	COX18 (COX18 Products)
Background:	Name/Gene ID: COX18 Synonyms: COX18, Cox18Hs1 protein, Cox18Hs3 protein, OXA1L2, COX18HS, Cox18Hs2 protein, Mitochondrial COX18
Gene ID:	285521
NCBI Accession:	NP_776188
UniProt:	Q8N8Q8

Application Details

Application Notes:	Approved: WB (0.2 - 1 µg/mL) Usage: Western Blot: Suggested dilution at 1 µg/mL in 5 % skim milk / PBS buffer, and HRP conjugated anti-Rabbit IgG should be diluted in 1: 50,000 - 100,000 as second antibody. ELISA titer in peptide based assay: 1:1562500.
Comment:	Target Species of Antibody: Human
Restrictions:	For Research Use only

Handling

Format:	Lyophilized
Reconstitution:	Distilled water
Concentration:	Lot specific
Buffer:	Lyophilized from PBS with 2 % sucrose
Handling Advice:	Avoid repeat freeze-thaw cycles.
Storage:	4 °C,-20 °C
Storage Comment:	Long term: -20°C, the use of 50% glycerol is recommended if storing aliquots in -20°C for long term use (up to 1 year) Short term (less than 1 week): 4°C. Avoid freeze-thaw cycles.

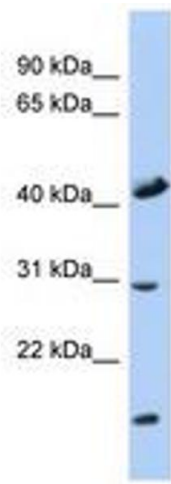


Image 1.