

Datasheet for ABIN6741373
anti-RHOC antibody (AA 35-84)[Go to Product page](#)

1 Image

Overview

Quantity:	100 µL
Target:	RHOC
Binding Specificity:	AA 35-84
Reactivity:	Human, Mouse, Rat, Dog, Rabbit, Cow, Guinea Pig, Zebrafish (Danio rerio), Horse, Drosophila melanogaster, Insect, Monkey, Pig, Xenopus laevis, Chicken
Host:	Rabbit
Clonality:	Polyclonal
Conjugate:	This RHOC antibody is un-conjugated
Application:	Western Blotting (WB)

Product Details

Immunogen:	Synthetic peptide located between aa35-84 of human RHOC (P08134, NP_786886). Percent identity by BLAST analysis: Human, Chimpanzee, Orangutan, Monkey, Mouse, Rat, Dog, Bovine, Rabbit, Horse, Pig, Guinea pig, Turkey, Zebra finch, Chicken, Lizard, Xenopus, Seabass, Catfish, Smelt, Sablefish, Stickleback, Pike, Zebrafish, Drosophila, Mosquito, Slime mold, Nematode (100%). Type of Immunogen: Synthetic peptide
Isotype:	IgG
Specificity:	Human RHOC
Predicted Reactivity:	Percent identity by BLAST analysis: Human, Mouse, Bovine, Chicken, Xenopus (100%).

Product Details

Purification: Immunoaffinity purified

Target Details

Target: RHOC

Alternative Name: RHOC ([RHOC Products](#))

Background: Name/Gene ID: RHOC

Synonyms: RHOC, ARHC, Rho cDNA clone 9, RhoC GTPase, RHOH9, Small GTP binding protein RhoC, ARH9, H9, Oncogene RHO H9, Ras homolog family member C, RAS-related homolog 9

Gene ID: 389

NCBI Accession: [NP_786886](#)

UniProt: [P08134](#)

Pathways: [WNT Signaling](#), [Cell-Cell Junction Organization](#)

Application Details

Application Notes: Approved: WB (0.2 - 1 µg/mL)

Usage: Western Blot: Suggested dilution at 1 µg/mL in 5 % skim milk / PBS buffer, and HRP conjugated anti-Rabbit IgG should be diluted in 1: 50,000 - 100,000 as second antibody. ELISA titer in peptide based assay: 1:62500.

Not recommended for: IHC-P

Comment: Target Species of Antibody: Human

Restrictions: For Research Use only

Handling

Format: Lyophilized

Reconstitution: Distilled water

Concentration: Lot specific

Buffer: Lyophilized from PBS with 2 % sucrose

Handling

Handling Advice:	Avoid repeat freeze-thaw cycles.
Storage:	4 °C,-20 °C
Storage Comment:	Long term: -20°C, the use of 50% glycerol is recommended if storing aliquots in -20°C for long term use (up to 1 year) Short term (less than 1 week): 4°C. Avoid freeze-thaw cycles.

Images

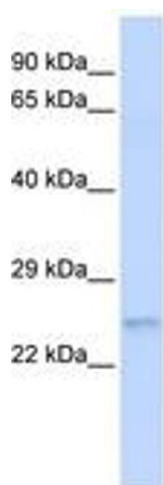


Image 1.