



[Go to Product page](#)

Datasheet for ABIN6741374

anti-Proline Rich 18 antibody (AA 179-228)

1 Image

Overview

Quantity:	100 µL
Target:	Proline Rich 18 (PRR18)
Binding Specificity:	AA 179-228
Reactivity:	Human
Host:	Rabbit
Clonality:	Polyclonal
Conjugate:	This Proline Rich 18 antibody is un-conjugated
Application:	Western Blotting (WB)

Product Details

Immunogen:	Synthetic peptide located between aa179-228 of human PRR18 (Q8N4B5, NP_787118). Percent identity by BLAST analysis: Human (100%), Gorilla (85%). Type of Immunogen: Synthetic peptide
Isotype:	IgG
Specificity:	Human PRR18
Predicted Reactivity:	Percent identity by BLAST analysis: Human (100%).
Purification:	Immunoaffinity purified

Target Details

Target:	Proline Rich 18 (PRR18)
---------	-------------------------

Target Details

Alternative Name: PRR18 ([PRR18 Products](#))

Background: Name/Gene ID: PRR18

Synonyms: PRR18, Proline rich 18, Proline rich region 18, Proline-rich protein 18

Gene ID: 285800

NCBI Accession: [NP_787118](#)

UniProt: [Q8N4B5](#)

Application Details

Application Notes: Approved: WB (0.2 - 1 µg/mL)

Usage: Western Blot: Suggested dilution at 1 µg/mL in 5 % skim milk / PBS buffer, and HRP conjugated anti-Rabbit IgG should be diluted in 1: 50,000 - 100,000 as second antibody. ELISA titer in peptide based assay: 1:312500.

Comment: Target Species of Antibody: Human

Restrictions: For Research Use only

Handling

Format: Lyophilized

Reconstitution: Distilled water

Concentration: Lot specific

Buffer: Lyophilized from PBS with 2 % sucrose

Handling Advice: Avoid repeat freeze-thaw cycles.

Storage: 4 °C, -20 °C

Storage Comment: Long term: -20°C, the use of 50% glycerol is recommended if storing aliquots in -20°C for long term use (up to 1 year)

Short term (less than 1 week): 4°C. Avoid freeze-thaw cycles.

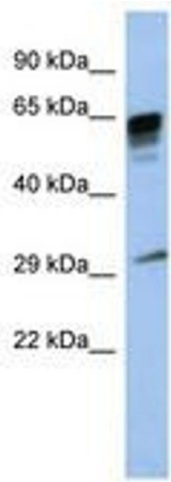


Image 1.