

Datasheet for ABIN6741375
anti-ARL5A antibody (AA 107-156)[Go to Product page](#)

1 Image

Overview

Quantity:	100 µL
Target:	ARL5A
Binding Specificity:	AA 107-156
Reactivity:	Human, Mouse, Rat, Rabbit, Cow, Dog, Goat, Sheep, Guinea Pig, Zebrafish (Danio rerio), Horse, Chicken, Hamster, Monkey, Pig, Xenopus laevis, Bat
Host:	Rabbit
Clonality:	Polyclonal
Conjugate:	This ARL5A antibody is un-conjugated
Application:	Western Blotting (WB)

Product Details

Immunogen:	Synthetic peptide located between aa107-156 of human ARL5A (Q9Y689, NP_036229). Percent identity by BLAST analysis: Human, Chimpanzee, Gorilla, Gibbon, Monkey, Galago, Marmoset, Mouse, Rat, Sheep, Goat, Hamster, Elephant, Dog, Bovine, Bat, Rabbit, Horse, Pig, Opossum, Guinea pig, Turkey, Zebra finch, Chicken, Platypus, Lizard, Xenopus, Salmon, Stickleback, Zebrafish (100%), Frog, Catfish, Smelt (92%), Slime mold (91%), Beetle (84%). Type of Immunogen: Synthetic peptide
Isotype:	IgG
Specificity:	Human ARL5A
Predicted Reactivity:	Percent identity by BLAST analysis: Human, Mouse, Rat, Sheep, Dog, Bovine, Goat, Guinea pig,

Product Details

Chicken, Zebrafish (100%).

Purification: Immunoaffinity purified

Target Details

Target: ARL5A

Alternative Name: ARL5A / ARL5 ([ARL5A Products](#))

Background: Name/Gene ID: ARL5A
Family: Ras GTPase superfamily IPR001806

Synonyms: ARL5A, ADP-ribosylation factor-like 5, ARFLP5, ARL5

Gene ID: 26225

NCBI Accession: [NP_036229](#)

UniProt: [Q9Y689](#)

Application Details

Application Notes: Approved: WB (0.2 - 1 µg/mL)

Usage: Western Blot: Suggested dilution at 1 µg/mL in 5 % skim milk / PBS buffer, and HRP conjugated anti-Rabbit IgG should be diluted in 1: 50,000 - 100,000 as second antibody. ELISA titer in peptide based assay: 1:62500.

Comment: Target Species of Antibody: Human

Restrictions: For Research Use only

Handling

Format: Lyophilized

Reconstitution: Distilled water

Concentration: Lot specific

Buffer: Lyophilized from PBS with 2 % sucrose

Handling Advice: Avoid repeat freeze-thaw cycles.

Storage: 4 °C, -20 °C

Handling

Storage Comment: Long term: -20°C, the use of 50% glycerol is recommended if storing aliquots in -20°C for long term use (up to 1 year)

Short term (less than 1 week): 4°C. Avoid freeze-thaw cycles.

Images

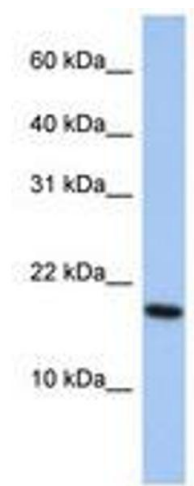


Image 1.