



[Go to Product page](#)

Datasheet for ABIN6741383

## anti-HEATR4 antibody (AA 49-98)

### 1 Image

#### Overview

Quantity:	100 µL
Target:	HEATR4
Binding Specificity:	AA 49-98
Reactivity:	Human
Host:	Rabbit
Clonality:	Polyclonal
Conjugate:	This HEATR4 antibody is un-conjugated
Application:	Western Blotting (WB)

#### Product Details

Immunogen:	Synthetic peptide located between aa49-98 of human HEATR4 (Q86WZ0, NP_976054). Percent identity by BLAST analysis: Human, Gorilla (100%), Gibbon, Monkey (92%), Marmoset (85%).  Type of Immunogen: Synthetic peptide
Isotype:	IgG
Specificity:	Human HEATR4
Predicted Reactivity:	Percent identity by BLAST analysis: Human (100%).
Purification:	Immunoaffinity purified

#### Target Details

Target:	HEATR4
---------	--------

## Target Details

---

Alternative Name:	HEATR4 ( <a href="#">HEATR4 Products</a> )
Background:	Name/Gene ID: HEATR4  Synonyms: HEATR4, HEAT repeat containing 4
Gene ID:	399671
NCBI Accession:	<a href="#">NP_976054</a>
UniProt:	<a href="#">Q86WZ0</a>

## Application Details

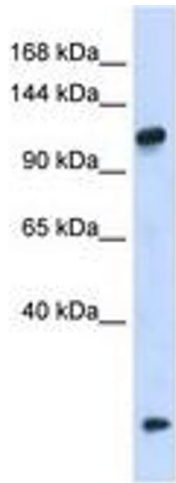
---

Application Notes:	Approved: WB (0.2 - 1 µg/mL)  Usage: Western Blot: Suggested dilution at 1 µg/mL in 5 % skim milk / PBS buffer, and HRP conjugated anti-Rabbit IgG should be diluted in 1: 50,000 - 100,000 as second antibody. ELISA titer in peptide based assay: 1:312500.
Comment:	Target Species of Antibody: Human
Restrictions:	For Research Use only

## Handling

---

Format:	Lyophilized
Reconstitution:	Distilled water
Concentration:	Lot specific
Buffer:	Lyophilized from PBS with 2 % sucrose
Handling Advice:	Avoid repeat freeze-thaw cycles.
Storage:	4 °C, -20 °C
Storage Comment:	Long term: -20°C, the use of 50% glycerol is recommended if storing aliquots in -20°C for long term use (up to 1 year)  Short term (less than 1 week): 4°C. Avoid freeze-thaw cycles.



**Image 1.**