

Datasheet for ABIN6741385  
**anti-PPP1R7 antibody (AA 107-156)**[Go to Product page](#)

## 1 Image

## Overview

Quantity:	100 µL
Target:	PPP1R7
Binding Specificity:	AA 107-156
Reactivity:	Human, Mouse, Rabbit, Monkey, Guinea Pig, Horse
Host:	Rabbit
Clonality:	Polyclonal
Conjugate:	This PPP1R7 antibody is un-conjugated
Application:	Western Blotting (WB)

## Product Details

Immunogen:	Synthetic peptide located between aa107-156 of human PPP1R7 (Q15435, NP_002703). Percent identity by BLAST analysis: Human, Chimpanzee, Gorilla, Orangutan, Gibbon, Monkey, Galago, Marmoset, Mouse, Panda, Rabbit, Horse, Opossum, Guinea pig (100%), Rat, Elephant, Bovine, Bat, Pig, Platypus (92%), Turkey, Zebra finch, Chicken, Lizard, Catfish, Stickleback, Zebrafish (85%).  Type of Immunogen: Synthetic peptide
Isotype:	IgG
Specificity:	Human PPP1R7
Predicted Reactivity:	Percent identity by BLAST analysis: Human, Rabbit, Horse (100%) Pig (92%) Chicken (85%).
Purification:	Immunoaffinity purified

## Target Details

Target:	PPP1R7
Alternative Name:	PPP1R7 ( <a href="#">PPP1R7 Products</a> )
Background:	Name/Gene ID: PPP1R7  Synonyms: PPP1R7, SDS22
Gene ID:	5510
NCBI Accession:	<a href="#">NP_002703</a>
UniProt:	<a href="#">Q15435</a>

## Application Details

Application Notes:	Approved: WB (0.2 - 1 µg/mL)  Usage: Western Blot: Suggested dilution at 1 µg/mL in 5 % skim milk / PBS buffer, and HRP conjugated anti-Rabbit IgG should be diluted in 1: 50,000 - 100,000 as second antibody. ELISA titer in peptide based assay: 1:312500.
Comment:	Target Species of Antibody: Human
Restrictions:	For Research Use only

## Handling

Format:	Lyophilized
Reconstitution:	Distilled water
Concentration:	Lot specific
Buffer:	Lyophilized from PBS with 2 % sucrose
Handling Advice:	Avoid repeat freeze-thaw cycles.
Storage:	4 °C, -20 °C
Storage Comment:	Long term: -20°C, the use of 50% glycerol is recommended if storing aliquots in -20°C for long term use (up to 1 year)  Short term (less than 1 week): 4°C. Avoid freeze-thaw cycles.

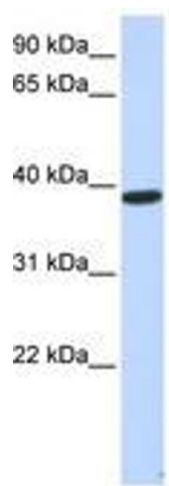


Image 1.