

Datasheet for ABIN6741386
anti-PSMA2 antibody (AA 36-85)[Go to Product page](#)

1 Image

Overview

Quantity:	100 µL
Target:	PSMA2
Binding Specificity:	AA 36-85
Reactivity:	Human, Mouse, Rat, Dog, Cow, Rabbit, Monkey, Horse, Guinea Pig, Sheep, Chicken, Pig, Hamster
Host:	Rabbit
Clonality:	Polyclonal
Conjugate:	This PSMA2 antibody is un-conjugated
Application:	Western Blotting (WB)

Product Details

Immunogen:	Synthetic peptide located between aa36-85 of human PSMA2 (P25787, NP_002778). Percent identity by BLAST analysis: Human, Chimpanzee, Gorilla, Gibbon, Monkey, Galago, Marmoset, Mouse, Rat, Sheep, Hamster, Elephant, Panda, Dog, Bovine, Rabbit, Horse, Pig, Guinea pig, Turkey, Zebra finch, Chicken, Platypus, Lizard, Trout, Catfish, Salmon, Pike (100%), Xenopus, Smelt, Stickleback, Zebrafish (92%). Type of Immunogen: Synthetic peptide
Isotype:	IgG
Specificity:	Human PSMA2 / HC3
Predicted Reactivity:	Percent identity by BLAST analysis: Human, Mouse, Rat, Dog, Chicken (100%) Zebrafish (92%).

Product Details

Purification: Immunoaffinity purified

Target Details

Target: PSMA2

Alternative Name: PSMA2 / HC3 ([PSMA2 Products](#))

Background: Name/Gene ID: PSMA2

Subfamily: Threonine T1

Family: Protease Non Catalytic

Synonyms: PSMA2, Macropain subunit C3, HC3, Proteasome component C3, Proteasome subunit HC3, PSC2, MU, PMSA2, PSC3

Gene ID: 5683

NCBI Accession: [NP_002778](#)

UniProt: [P25787](#)

Pathways: [Mitotic G1-G1/S Phases](#), [DNA Replication](#), [Synthesis of DNA](#)

Application Details

Application Notes: Approved: WB (0.2 - 1 µg/mL)

Usage: Western Blot: Suggested dilution at 1 µg/mL in 5 % skim milk / PBS buffer, and HRP conjugated anti-Rabbit IgG should be diluted in 1: 50,000 - 100,000 as second antibody. ELISA titer in peptide based assay: 1:312500.

Comment: Target Species of Antibody: Human

Restrictions: For Research Use only

Handling

Format: Lyophilized

Reconstitution: Distilled water

Concentration: Lot specific

Buffer: Lyophilized from PBS with 2 % sucrose

Handling

Handling Advice:	Avoid repeat freeze-thaw cycles.
Storage:	4 °C,-20 °C
Storage Comment:	Long term: -20°C, the use of 50% glycerol is recommended if storing aliquots in -20°C for long term use (up to 1 year) Short term (less than 1 week): 4°C. Avoid freeze-thaw cycles.

Images

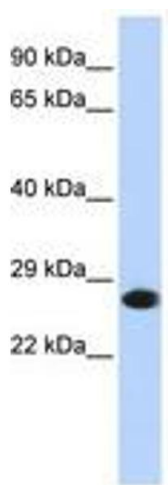


Image 1.