

Datasheet for ABIN6741387
anti-PSMB2 antibody (AA 107-156)[Go to Product page](#)

1 Image

Overview

Quantity:	100 µL
Target:	PSMB2
Binding Specificity:	AA 107-156
Reactivity:	Human, Mouse, Rat, Cow, Dog, Horse, Monkey, Hamster
Host:	Rabbit
Clonality:	Polyclonal
Conjugate:	This PSMB2 antibody is un-conjugated
Application:	Western Blotting (WB)

Product Details

Immunogen:	Synthetic peptide located between aa107-156 of human PSMB2 (P49721, NP_002785). Percent identity by BLAST analysis: Human, Chimpanzee, Gorilla, Gibbon, Monkey, Marmoset, Mouse, Rat, Hamster, Elephant, Panda, Dog, Bovine, Horse (100%), Galago, Rabbit, Guinea pig (92%), Bat (85%). Type of Immunogen: Synthetic peptide
Isotype:	IgG
Specificity:	Human PSMB2
Predicted Reactivity:	Percent identity by BLAST analysis: Human, Mouse, Dog (100%) Rabbit (92%).
Purification:	Immunoaffinity purified

Target Details

Target:	PSMB2
Alternative Name:	PSMB2 (PSMB2 Products)
Background:	Name/Gene ID: PSMB2 Subfamily: Threonine T1 Family: Protease Synonyms: PSMB2, Macropain subunit C7-I, HC7-I, Proteasome component C7-I, Proteasome beta 2 subunit, Proteasome subunit beta type-2, C7-I, Proteasome subunit beta 2
Gene ID:	5690
NCBI Accession:	NP_002785
UniProt:	P49721
Pathways:	Mitotic G1-G1/S Phases , DNA Replication , Synthesis of DNA

Application Details

Application Notes:	Approved: WB (0.2 - 1 µg/mL) Usage: Western Blot: Suggested dilution at 1 µg/mL in 5 % skim milk / PBS buffer, and HRP conjugated anti-Rabbit IgG should be diluted in 1: 50,000 - 100,000 as second antibody. ELISA titer in peptide based assay: 1:312500. Not recommended for: IHC-P
Comment:	Target Species of Antibody: Human
Restrictions:	For Research Use only

Handling

Format:	Lyophilized
Reconstitution:	Distilled water
Concentration:	Lot specific
Buffer:	Lyophilized from PBS with 2 % sucrose
Handling Advice:	Avoid repeat freeze-thaw cycles.

Handling

Storage:	4 °C,-20 °C
Storage Comment:	Long term: -20°C, the use of 50% glycerol is recommended if storing aliquots in -20°C for long term use (up to 1 year) Short term (less than 1 week): 4°C. Avoid freeze-thaw cycles.

Images

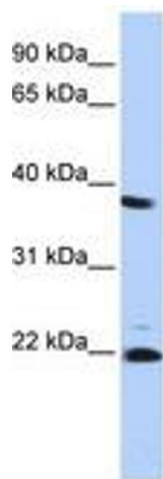


Image 1.