



[Go to Product page](#)

Datasheet for ABIN6741397

anti-LACTB2 antibody (AA 107-156)

1 Image

Overview

Quantity:	100 µL
Target:	LACTB2
Binding Specificity:	AA 107-156
Reactivity:	Human, Mouse, Rat, Dog, Monkey, Xenopus laevis, Chicken
Host:	Rabbit
Clonality:	Polyclonal
Conjugate:	This LACTB2 antibody is un-conjugated
Application:	Western Blotting (WB)

Product Details

Immunogen:	Synthetic peptide located between aa107-156 of human LACTB2 (Q53H82, NP_057111). Percent identity by BLAST analysis: Human, Gorilla, Gibbon, Monkey, Marmoset, Mouse, Rat, Turkey, Zebra finch, Chicken, Lizard, Xenopus (100%), Elephant, Bovine, Bat, Rabbit, Horse, Pig, Opossum, Guinea pig, Platypus, Zebrafish (92%), Dog, Stickleback (85%). Type of Immunogen: Synthetic peptide
Isotype:	IgG
Specificity:	Human LACTB2
Predicted Reactivity:	Percent identity by BLAST analysis: Chicken (100%) Rabbit, Horse, Pig, Guinea pig (92%) Dog (85%).
Purification:	Immunoaffinity purified

Target Details

Target:	LACTB2
Alternative Name:	LACTB2 (LACTB2 Products)
Background:	Name/Gene ID: LACTB2 Synonyms: LACTB2, CGI-83, Beta-lactamase-like protein 2, Lactamase, beta 2
Gene ID:	51110
NCBI Accession:	NP_057111
UniProt:	Q53H82

Application Details

Application Notes:	Approved: WB (0.2 - 1 µg/mL) Usage: Western Blot: Suggested dilution at 1 µg/mL in 5 % skim milk / PBS buffer, and HRP conjugated anti-Rabbit IgG should be diluted in 1: 50,000 - 100,000 as second antibody. ELISA titer in peptide based assay: 1:1562500.
Comment:	Target Species of Antibody: Human
Restrictions:	For Research Use only

Handling

Format:	Lyophilized
Reconstitution:	Distilled water
Concentration:	Lot specific
Buffer:	Lyophilized from PBS with 2 % sucrose
Handling Advice:	Avoid repeat freeze-thaw cycles.
Storage:	4 °C, -20 °C
Storage Comment:	Long term: -20°C, the use of 50% glycerol is recommended if storing aliquots in -20°C for long term use (up to 1 year) Short term (less than 1 week): 4°C. Avoid freeze-thaw cycles.

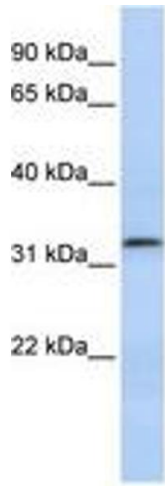


Image 1.