

Datasheet for ABIN6741403
anti-PDXP antibody (AA 179-228)[Go to Product page](#)

1 Image

Overview

Quantity:	100 µL
Target:	PDXP
Binding Specificity:	AA 179-228
Reactivity:	Mouse, Human, Cow, Dog, Horse, Bat
Host:	Rabbit
Clonality:	Polyclonal
Conjugate:	This PDXP antibody is un-conjugated
Application:	Western Blotting (WB)

Product Details

Immunogen:	Synthetic peptide located between aa179-228 of human PDXP (Q96GD0, NP_064711). Percent identity by BLAST analysis: Human, Chimpanzee, Gorilla, Monkey, Mouse, Dog, Bovine, Bat, Horse (100%), Marmoset, Rat, Rabbit, Chicken (92%), Opossum (85%). Type of Immunogen: Synthetic peptide
Isotype:	IgG
Specificity:	Human PDXP
Predicted Reactivity:	Percent identity by BLAST analysis: Mouse, Dog, Horse (100%) Rat (92%).
Purification:	Immunoaffinity purified

Target Details

Target:	PDXP
Alternative Name:	PDXP (PDXP Products)
Background:	Name/Gene ID: PDXP Synonyms: PDXP, DJ37E16.5, Chronophin, CIN, PLP, PLP phosphatase, PLPP
Gene ID:	57026
NCBI Accession:	NP_064711
UniProt:	Q96GD0

Application Details

Application Notes:	Approved: WB (0.2 - 1 µg/mL) Usage: Western Blot: Suggested dilution at 1 µg/mL in 5 % skim milk / PBS buffer, and HRP conjugated anti-Rabbit IgG should be diluted in 1: 50,000 - 100,000 as second antibody. ELISA titer in peptide based assay: 1:312500.
Comment:	Target Species of Antibody: Human
Restrictions:	For Research Use only

Handling

Format:	Lyophilized
Reconstitution:	Distilled water
Concentration:	Lot specific
Buffer:	Lyophilized from PBS with 2 % sucrose
Handling Advice:	Avoid repeat freeze-thaw cycles.
Storage:	4 °C, -20 °C
Storage Comment:	Long term: -20°C, the use of 50% glycerol is recommended if storing aliquots in -20°C for long term use (up to 1 year) Short term (less than 1 week): 4°C. Avoid freeze-thaw cycles.

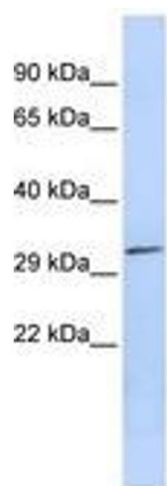


Image 1.