

Datasheet for ABIN6741407 anti-ERCC8 antibody (AA 72-121)



[Go to Product page](#)

1 Image

Overview

Quantity:	100 µL
Target:	ERCC8
Binding Specificity:	AA 72-121
Reactivity:	Human, Mouse, Rat, Dog, Rabbit, Horse, Cow
Host:	Rabbit
Clonality:	Polyclonal
Conjugate:	This ERCC8 antibody is un-conjugated
Application:	Western Blotting (WB)

Product Details

Immunogen:	Synthetic peptide located between aa72-121 of human ERCC8 (B2RB64, NP_000073). Percent identity by BLAST analysis: Human, Chimpanzee, Gorilla, Gibbon, Monkey (100%), Galago (92%), Marmoset, Bat (90%), Mouse, Rat, Hamster, Elephant, Panda, Dog, Bovine, Rabbit, Horse, Pig, Opossum, Guinea pig (85%). Type of Immunogen: Synthetic peptide
Isotype:	IgG
Specificity:	Human ERCC8
Predicted Reactivity:	Percent identity by BLAST analysis: Human (100%) Mouse, Rat, Dog, Bovine, Rabbit, Horse (85%).
Purification:	Immunoaffinity purified

Target Details

Target:	ERCC8
Alternative Name:	CSA / ERCC8 (ERCC8 Products)
Background:	Name/Gene ID: ERCC8 Synonyms: ERCC8, CKN1, UVSS2, CSA
Gene ID:	1161
NCBI Accession:	NP_000073
UniProt:	Q13216
Pathways:	DNA Damage Repair , Positive Regulation of Response to DNA Damage Stimulus

Application Details

Application Notes:	Approved: WB (0.2 - 1 µg/mL) Usage: Western Blot: Suggested dilution at 1 µg/mL in 5 % skim milk / PBS buffer, and HRP conjugated anti-Rabbit IgG should be diluted in 1: 50,000 - 100,000 as second antibody. ELISA titer in peptide based assay: 1:62500.
Comment:	Target Species of Antibody: Human
Restrictions:	For Research Use only

Handling

Format:	Lyophilized
Reconstitution:	Distilled water
Concentration:	Lot specific
Buffer:	Lyophilized from PBS with 2 % sucrose
Handling Advice:	Avoid repeat freeze-thaw cycles.
Storage:	4 °C,-20 °C
Storage Comment:	Long term: -20°C, the use of 50% glycerol is recommended if storing aliquots in -20°C for long term use (up to 1 year) Short term (less than 1 week): 4°C. Avoid freeze-thaw cycles.

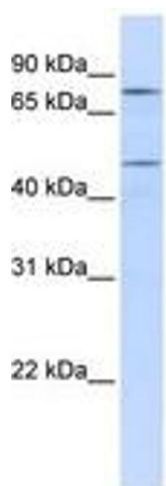


Image 1.