



[Go to Product page](#)

Datasheet for ABIN6741412
anti-UBE2K antibody (AA 36-85)

1 Image

Overview

Quantity:	100 µL
Target:	UBE2K
Binding Specificity:	AA 36-85
Reactivity:	Human, Mouse, Rat, Dog, Zebrafish (Danio rerio), Cow, Horse, Rabbit, Goat, Guinea Pig, Pig, Xenopus laevis, Chicken, Monkey, Hamster, Bat, Drosophila melanogaster
Host:	Rabbit
Clonality:	Polyclonal
Application:	Western Blotting (WB)

Product Details

Immunogen:	Synthetic peptide located between aa36-85 of human UBE2K (P61086, NP_005330). Percent identity by BLAST analysis: Human, Chimpanzee, Gorilla, Gibbon, Monkey, Galago, Marmoset, Mouse, Rat, Goat, Hamster, Elephant, Panda, Dog, Bovine, Bat, Rabbit, Horse, Pig, Opossum, Guinea pig, Turkey, Chicken, Lizard, Xenopus, Salmon, Zebrafish, Drosophila (100%), Beetle (84%). Type of Immunogen: Synthetic peptide
Isotype:	IgG
Specificity:	Human UBE2K / HIP2
Predicted Reactivity:	Percent identity by BLAST analysis: Human, Mouse, Rat, Dog, Bovine, Chicken, Xenopus, Zebrafish (100%).

Product Details

Purification: Immunoaffinity purified

Target Details

Target: UBE2K

Alternative Name: UBE2K / LIG ([UBE2K Products](#))

Background: Name/Gene ID: UBE2K

Synonyms: UBE2K, E2-25K, E2(25K), HIP2, HYPG, LIG, UBC1, Ubiquitin-protein ligase, HIP-2, Ubiquitin carrier protein

Gene ID: 3093

NCBI Accession: [NP_005330](#)

UniProt: [P61086](#)

Application Details

Application Notes: Approved: WB (0.2 - 1 µg/mL)

Usage: Western Blot: Suggested dilution at 1 µg/mL in 5 % skim milk / PBS buffer, and HRP conjugated anti-Rabbit IgG should be diluted in 1: 50,000 - 100,000 as second antibody. ELISA titer in peptide based assay: 1:312500.

Comment: Target Species of Antibody: Human

Restrictions: For Research Use only

Handling

Format: Lyophilized

Reconstitution: Distilled water

Concentration: Lot specific

Buffer: Lyophilized from PBS with 2 % sucrose

Handling Advice: Avoid repeat freeze-thaw cycles.

Storage: 4 °C, -20 °C

Storage Comment: Long term: -20°C, the use of 50% glycerol is recommended if storing aliquots in -20°C for long

Handling

term use (up to 1 year)

Short term (less than 1 week): 4°C. Avoid freeze-thaw cycles.

Images

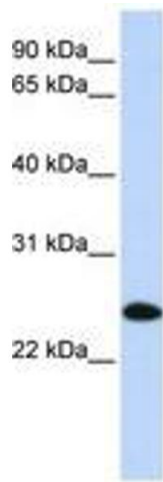


Image 1.