



[Go to Product page](#)

Datasheet for ABIN6741418
anti-PAX1 antibody (AA 216-265)

1 Image

Overview

Quantity:	100 µL
Target:	PAX1
Binding Specificity:	AA 216-265
Reactivity:	Human, Guinea Pig, Monkey
Host:	Rabbit
Clonality:	Polyclonal
Conjugate:	This PAX1 antibody is un-conjugated
Application:	Western Blotting (WB)

Product Details

Immunogen:	Synthetic peptide located between aa216-265 of human PAX1 (P15863, NP_006183). Percent identity by BLAST analysis: Human, Chimpanzee, Gorilla, Gibbon, Monkey, Marmoset (100%), Galago, Mouse, Rat, Elephant, Dog, Bat, Rabbit, Pig (92%), Guinea pig (85%). Type of Immunogen: Synthetic peptide
Isotype:	IgG
Specificity:	Human PAX1
Predicted Reactivity:	Percent identity by BLAST analysis: Human (100%) Mouse, Rat, Dog, Rabbit (92%) Guinea pig (85%).
Purification:	Immunoaffinity purified

Target Details

Target:	PAX1
Alternative Name:	PAX1 (PAX1 Products)
Background:	Name/Gene ID: PAX1 Synonyms: PAX1, HUP48, Paired box 1, Paired box gene 1, Paired box protein Pax-1, Paired domain gene HuP48
Gene ID:	5075
NCBI Accession:	NP_006183
UniProt:	P15863

Application Details

Application Notes:	Approved: WB (0.2 - 1 µg/mL) Usage: Western Blot: Suggested dilution at 1 µg/mL in 5 % skim milk / PBS buffer, and HRP conjugated anti-Rabbit IgG should be diluted in 1: 50,000 - 100,000 as second antibody. ELISA titer in peptide based assay: 1:312500.
Comment:	Target Species of Antibody: Human
Restrictions:	For Research Use only

Handling

Format:	Lyophilized
Reconstitution:	Distilled water
Concentration:	Lot specific
Buffer:	Lyophilized from PBS with 2 % sucrose
Handling Advice:	Avoid repeat freeze-thaw cycles.
Storage:	4 °C,-20 °C
Storage Comment:	Long term: -20°C, the use of 50% glycerol is recommended if storing aliquots in -20°C for long term use (up to 1 year) Short term (less than 1 week): 4°C. Avoid freeze-thaw cycles.

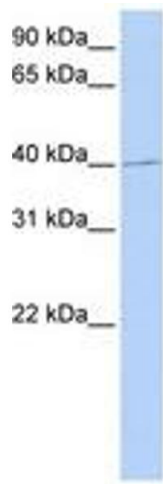


Image 1.