

Datasheet for ABIN6741432 **anti-RNF5 antibody (N-Term)**



[Go to Product page](#)

1 Image

Overview

Quantity:	100 µL
Target:	RNF5
Binding Specificity:	N-Term
Reactivity:	Human, Mouse, Rat, Pig, Cow, Dog, Monkey
Host:	Rabbit
Clonality:	Polyclonal
Conjugate:	This RNF5 antibody is un-conjugated
Application:	Western Blotting (WB)

Product Details

Immunogen:	Synthetic peptide from N-Terminus of human RNF5 (Q99942, NP_008844). Percent identity by BLAST analysis: Human, Chimpanzee, Gorilla, Gibbon, Monkey, Galago, Marmoset, Mouse, Rat, Elephant, Panda, Dog, Bovine, Pig (100%), Hamster, Horse, Guinea pig (92%), Rabbit (91%), Bat (85%), Opossum (84%). Type of Immunogen: Synthetic peptide
Isotype:	IgG
Specificity:	Human RNF5
Predicted Reactivity:	Percent identity by BLAST analysis: Human, Mouse, Rat, Dog, Bovine, Pig (100%) Guinea pig (92%) Rabbit (91%).
Purification:	Immunoaffinity purified

Target Details

Target:	RNF5
Alternative Name:	RMA1 / RNF5 (RNF5 Products)
Background:	Name/Gene ID: RNF5 Synonyms: RNF5, G16, HsRma1, NG2, RING5, Protein G16, Ram1 homolog, RING finger protein 5, RMA1
Gene ID:	6048
NCBI Accession:	NP_008844
UniProt:	Q99942

Application Details

Application Notes:	Approved: WB (0.2 - 1 µg/mL) Usage: Western Blot: Suggested dilution at 1 µg/mL in 5 % skim milk / PBS buffer, and HRP conjugated anti-Rabbit IgG should be diluted in 1: 50,000 - 100,000 as second antibody. ELISA titer in peptide based assay: 1:12500.
Comment:	Target Species of Antibody: Human
Restrictions:	For Research Use only

Handling

Format:	Lyophilized
Reconstitution:	Distilled water
Concentration:	Lot specific
Buffer:	Lyophilized from PBS with 2 % sucrose
Handling Advice:	Avoid repeat freeze-thaw cycles.
Storage:	4 °C,-20 °C
Storage Comment:	Long term: -20°C, the use of 50% glycerol is recommended if storing aliquots in -20°C for long term use (up to 1 year) Short term (less than 1 week): 4°C. Avoid freeze-thaw cycles.

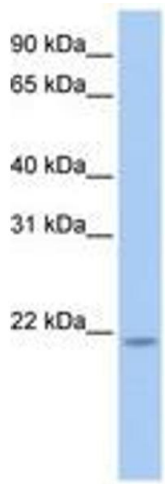


Image 1.