



Datasheet for ABIN6741438 **anti-H2AFY antibody (AA 36-85)**



[Go to Product page](#)

1 Image

Overview

Quantity:	100 µL
Target:	H2AFY
Binding Specificity:	AA 36-85
Reactivity:	Human, Rat, Mouse, Cow, Horse, Dog, Guinea Pig, Rabbit, Pig, Monkey, Zebrafish (Danio rerio), Bat, Chicken, Xenopus laevis
Host:	Rabbit
Clonality:	Polyclonal
Conjugate:	This H2AFY antibody is un-conjugated
Application:	Western Blotting (WB)

Product Details

Immunogen:	Synthetic peptide located between aa36-85 of human H2AFY (O75367, NP_001035248). Percent identity by BLAST analysis: Human, Chimpanzee, Gorilla, Gibbon, Monkey, Galago, Marmoset, Mouse, Rat, Elephant, Panda, Dog, Bovine, Bat, Rabbit, Horse, Pig, Opossum, Guinea pig, Turkey, Zebra finch, Chicken, Platypus, Lizard, Xenopus, Catfish, Salmon, Stickleback, Zebrafish (100%), Frog, Pike, Sea squirt, Drosophila, Grape, Arabidopsis (92%). Type of Immunogen: Synthetic peptide
Isotype:	IgG
Specificity:	Human H2AFY
Predicted Reactivity:	Percent identity by BLAST analysis: Human, Mouse, Rat, Dog, Bovine, Horse, Pig, Chicken,

Product Details

Zebrafish (100%) Rabbit, Xenopus (92%).

Purification: Immunoaffinity purified

Target Details

Target: H2AFY

Alternative Name: H2AFY / MACROH2A1 ([H2AFY Products](#))

Background: Name/Gene ID: H2AFY

Synonyms: H2AFY, Core histone macro-H2A.1, Histone macroH2A1.1, H2A histone family, member Y, H2A.y, Histone H2A.y, MACROH2A1.1, MacroH2A1.2, H2AF12M, Histone macroH2A1.2, MACROH2A1, Histone macroH2A1, MH2A1

Gene ID: 9555

NCBI Accession: [NP_001035248](#)

UniProt: [O75367](#)

Application Details

Application Notes: Approved: WB (0.2 - 1 µg/mL)

Usage: Western Blot: Suggested dilution at 1 µg/mL in 5 % skim milk / PBS buffer, and HRP conjugated anti-Rabbit IgG should be diluted in 1: 50,000 - 100,000 as second antibody. ELISA titer in peptide based assay: 1:12500.

Comment: Target Species of Antibody: Human

Restrictions: For Research Use only

Handling

Format: Lyophilized

Reconstitution: Distilled water

Concentration: Lot specific

Buffer: Lyophilized from PBS with 2 % sucrose

Handling Advice: Avoid repeat freeze-thaw cycles.

Handling

Storage: 4 °C, -20 °C

Storage Comment: Long term: -20°C, the use of 50% glycerol is recommended if storing aliquots in -20°C for long term use (up to 1 year)
Short term (less than 1 week): 4°C. Avoid freeze-thaw cycles.

Images

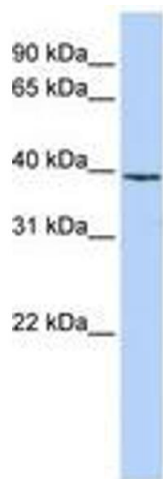


Image 1.