



[Go to Product page](#)

Datasheet for ABIN6741447

anti-ALDH1B1 antibody (AA 395-444)

1 Image

Overview

Quantity:	100 µL
Target:	ALDH1B1
Binding Specificity:	AA 395-444
Reactivity:	Human, Rat, Mouse, Pig, Cow, Horse, Chicken
Host:	Rabbit
Clonality:	Polyclonal
Conjugate:	This ALDH1B1 antibody is un-conjugated
Application:	Western Blotting (WB)

Product Details

Immunogen:	Synthetic peptide located between aa395-444 of human ALDH1B1 (P30837, NP_000683). Percent identity by BLAST analysis: Human, Chicken (100%), Gorilla, Gibbon, Monkey, Galago, Marmoset, Elephant, Dog (92%), Platypus (91%), Turkey, Lizard (90%), Mouse, Rat, Hamster, Panda, Bovine, Pig (85%), Guinea pig, Zebrafish (84%). Type of Immunogen: Synthetic peptide
Isotype:	IgG
Specificity:	Human ALDH1B1
Predicted Reactivity:	Percent identity by BLAST analysis: Human (100%) Dog (92%) Mouse, Rat, Bovine, Pig (85%).
Purification:	Immunoaffinity purified

Target Details

Target:	ALDH1B1
Alternative Name:	ALDH1B1 (ALDH1B1 Products)
Background:	Name/Gene ID: ALDH1B1 Synonyms: ALDH1B1, Acetaldehyde dehydrogenase 5, ALDHX, Aldehyde dehydrogenase 5, ALDH5, ALDH class 2
Gene ID:	219
NCBI Accession:	NP_000683
UniProt:	P30837

Application Details

Application Notes:	Approved: WB (0.2 - 1 µg/mL) Usage: Western Blot: Suggested dilution at 1 µg/mL in 5 % skim milk / PBS buffer, and HRP conjugated anti-Rabbit IgG should be diluted in 1: 50,000 - 100,000 as second antibody. ELISA titer in peptide based assay: 1:312500.
Comment:	Target Species of Antibody: Human
Restrictions:	For Research Use only

Handling

Format:	Lyophilized
Reconstitution:	Distilled water
Concentration:	Lot specific
Buffer:	Lyophilized from PBS with 2 % sucrose
Handling Advice:	Avoid repeat freeze-thaw cycles.
Storage:	4 °C,-20 °C
Storage Comment:	Long term: -20°C, the use of 50% glycerol is recommended if storing aliquots in -20°C for long term use (up to 1 year) Short term (less than 1 week): 4°C. Avoid freeze-thaw cycles.

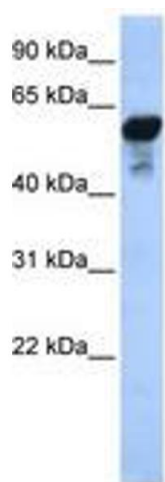


Image 1.