

Datasheet for ABIN6741459  
**anti-OR10X1 antibody (AA 383-432)**[Go to Product page](#)

## 1 Image

## Overview

Quantity:	100 µL
Target:	OR10X1
Binding Specificity:	AA 383-432
Reactivity:	Human, Mouse, Rat, Cow, Dog, Horse, Pig, Rabbit
Host:	Rabbit
Clonality:	Polyclonal
Conjugate:	This OR10X1 antibody is un-conjugated
Application:	Western Blotting (WB)

## Product Details

Immunogen:	Synthetic peptide located between aa383-432 of human OR10X1 (Q8NGY0, NP_001004477). Percent identity by BLAST analysis: Human, Chimpanzee, Gorilla, Mouse, Rat, Bovine, Rabbit, Horse, Pig (100%), Monkey (92%), Hamster, Dog (85%), Guinea pig (84%).  Type of Immunogen: Synthetic peptide
Isotype:	IgG
Specificity:	Human OR10X1
Predicted Reactivity:	Percent identity by BLAST analysis: Dog, Rabbit (85%).
Purification:	Immunoaffinity purified

## Target Details

Target:	OR10X1
Alternative Name:	OR10X1 ( <a href="#">OR10X1 Products</a> )
Background:	Name/Gene ID: OR10X1  Synonyms: OR10X1, Olfactory receptor 10X1, Olfactory receptor OR1-14, OR1-14, OR10X1P, OR1-13
Gene ID:	128367
NCBI Accession:	<a href="#">NP_001004477</a>
UniProt:	<a href="#">Q8NGY0</a>

## Application Details

Application Notes:	Approved: WB (0.2 - 1 µg/mL)  Usage: Western Blot: Suggested dilution at 1 µg/mL in 5 % skim milk / PBS buffer, and HRP conjugated anti-Rabbit IgG should be diluted in 1: 50,000 - 100,000 as second antibody. ELISA titer in peptide based assay: 1:62500.
Comment:	Target Species of Antibody: Human
Restrictions:	For Research Use only

## Handling

Format:	Lyophilized
Reconstitution:	Distilled water
Concentration:	Lot specific
Buffer:	Lyophilized from PBS with 2 % sucrose
Handling Advice:	Avoid repeat freeze-thaw cycles.
Storage:	4 °C,-20 °C
Storage Comment:	Long term: -20°C, the use of 50% glycerol is recommended if storing aliquots in -20°C for long term use (up to 1 year)  Short term (less than 1 week): 4°C. Avoid freeze-thaw cycles.

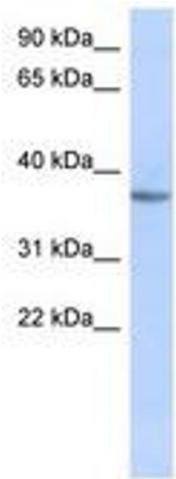


Image 1.