

Datasheet for ABIN6741462
anti-SLC25A6 antibody (AA 36-85)[Go to Product page](#)

1 Image

Overview

Quantity:	100 µL
Target:	SLC25A6
Binding Specificity:	AA 36-85
Reactivity:	Human, Cow, Dog, Pig, Sheep, Chicken
Host:	Rabbit
Clonality:	Polyclonal
Conjugate:	This SLC25A6 antibody is un-conjugated
Application:	Western Blotting (WB)

Product Details

Immunogen:	Synthetic peptide located between aa36-85 of human SLC25A6 (Q6QRN9, NP_001627). Percent identity by BLAST analysis: Human, Gorilla, Gibbon, Galago, Marmoset, Sheep, Elephant, Dog, Bovine, Pig, Opossum, Turkey, Zebra finch, Chicken, Beetle (100%), Orangutan, Monkey, Mouse, Rat, Bat, Rabbit, Horse, Guinea pig, Lizard, Xenopus, Pufferfish, Zebrafish, Mosquito, Slime mold (92%), Goat, Catfish, Salmon, Smelt, Stickleback, Pike (85%), Drosophila (84%). Type of Immunogen: Synthetic peptide
Isotype:	IgG
Specificity:	Human SLC25A6
Predicted Reactivity:	Percent identity by BLAST analysis: Human, Sheep, Dog, Chicken (100%) Zebrafish (92%).
Purification:	Immunoaffinity purified

Target Details

Target:	SLC25A6
Alternative Name:	SLC25A6 / ANT3 (SLC25A6 Products)
Background:	Name/Gene ID: SLC25A6 Subfamily: Mitochondrial carrier Family: Transporter Synonyms: SLC25A6, ADP,ATP carrier protein, ADP,ATP carrier protein 3, ADP,ATP carrier protein, liver, ANT 2, ANT 3, AAC3, ADP/ATP translocase 3, ADP/ATP translocator of liver, ANT3, ANT3Y
Gene ID:	293
NCBI Accession:	NP_001627
UniProt:	P12236

Application Details

Application Notes:	Approved: WB (0.2 - 1 µg/mL) Usage: Western Blot: Suggested dilution at 1 µg/mL in 5 % skim milk / PBS buffer, and HRP conjugated anti-Rabbit IgG should be diluted in 1: 50,000 - 100,000 as second antibody. ELISA titer in peptide based assay: 1:1562500.
Comment:	Target Species of Antibody: Human
Restrictions:	For Research Use only

Handling

Format:	Lyophilized
Reconstitution:	Distilled water
Concentration:	Lot specific
Buffer:	Lyophilized from PBS with 2 % sucrose
Handling Advice:	Avoid repeat freeze-thaw cycles.
Storage:	4 °C,-20 °C
Storage Comment:	Long term: -20°C, the use of 50% glycerol is recommended if storing aliquots in -20°C for long

Handling

term use (up to 1 year)
Short term (less than 1 week): 4°C. Avoid freeze-thaw cycles.

Images

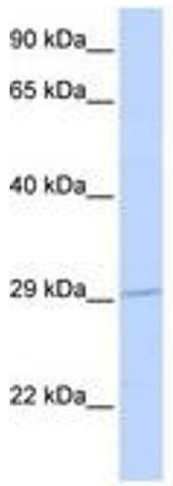


Image 1.