



[Go to Product page](#)

Datasheet for ABIN6741464
anti-TXNDC5 antibody (AA 36-85)

1 Image

Overview

Quantity:	100 µL
Target:	TXNDC5
Binding Specificity:	AA 36-85
Reactivity:	Human
Host:	Rabbit
Clonality:	Polyclonal
Conjugate:	This TXNDC5 antibody is un-conjugated
Application:	Western Blotting (WB)

Product Details

Immunogen:	Synthetic peptide located between aa36-85 of human TXNDC5 (Q8NBS9, NP_110437). Percent identity by BLAST analysis: Human, Chimpanzee (100%), Gibbon (92%), Marmoset (85%). Type of Immunogen: Synthetic peptide
Isotype:	IgG
Specificity:	Human TXNDC5
Predicted Reactivity:	Percent identity by BLAST analysis: Human (100%).
Purification:	Immunoaffinity purified

Target Details

Target:	TXNDC5
---------	--------

Target Details

Alternative Name:	TXNDC5 / ERP46 (TXNDC5 Products)
Background:	Name/Gene ID: TXNDC5 Synonyms: TXNDC5, ENDOPDI, ER protein 46, ERP46, PDIA15, STRF8, TLP46, UNQ364, HCC-2, Thioredoxin related protein, Thioredoxin-like protein p46
Gene ID:	81567
NCBI Accession:	NP_110437
UniProt:	Q8NBS9
Pathways:	Cell RedoxHomeostasis

Application Details

Application Notes:	Approved: WB (0.2 - 1 µg/mL) Usage: Western Blot: Suggested dilution at 1 µg/mL in 5 % skim milk / PBS buffer, and HRP conjugated anti-Rabbit IgG should be diluted in 1: 50,000 - 100,000 as second antibody. ELISA titer in peptide based assay: 1:62500.
Comment:	Target Species of Antibody: Human
Restrictions:	For Research Use only

Handling

Format:	Lyophilized
Reconstitution:	Distilled water
Concentration:	Lot specific
Buffer:	Lyophilized from PBS with 2 % sucrose
Handling Advice:	Avoid repeat freeze-thaw cycles.
Storage:	4 °C,-20 °C
Storage Comment:	Long term: -20°C, the use of 50% glycerol is recommended if storing aliquots in -20°C for long term use (up to 1 year) Short term (less than 1 week): 4°C. Avoid freeze-thaw cycles.

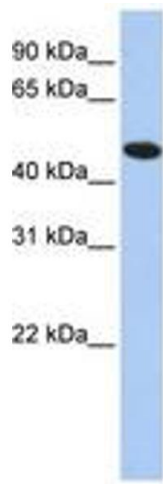


Image 1.