



[Go to Product page](#)

Datasheet for ABIN6741469  
**anti-BPNT1 antibody (AA 35-84)**

1 Image

Overview

Quantity:	100 µL
Target:	BPNT1
Binding Specificity:	AA 35-84
Reactivity:	Human, Mouse, Rat, Cow, Rabbit, Monkey
Host:	Rabbit
Clonality:	Polyclonal
Conjugate:	This BPNT1 antibody is un-conjugated
Application:	Western Blotting (WB)

Product Details

Immunogen:	Synthetic peptide located between aa35-84 of human BPNT1 (O95861, NP_006076). Percent identity by BLAST analysis: Human, Chimpanzee, Gorilla, Gibbon, Galago, Marmoset, Rabbit (100%), Elephant, Panda, Dog, Pig (92%), Xenopus (91%), Smelt (90%), Mouse, Rat, Hamster, Bovine, Horse, Opossum, Guinea pig, Lizard (85%).  Type of Immunogen: Synthetic peptide
Isotype:	IgG
Specificity:	Human BPNT1
Predicted Reactivity:	Percent identity by BLAST analysis: Human (100%) Dog (92%) Xenopus (91%) Mouse, Rat, Bovine (85%).
Purification:	Immunoaffinity purified

## Target Details

---

Target:	BPNT1
Alternative Name:	BPNT1 ( <a href="#">BPNT1 Products</a> )
Background:	Name/Gene ID: BPNT1  Synonyms: BPNT1, Bisphosphate 3-nucleotidase 1, PAP-inositol-1,4-phosphatase, BPntase, PAP-inositol 1,4-phosphatase
Gene ID:	10380
NCBI Accession:	<a href="#">NP_006076</a>
UniProt:	<a href="#">O95861</a>
Pathways:	<a href="#">Inositol Metabolic Process</a>

## Application Details

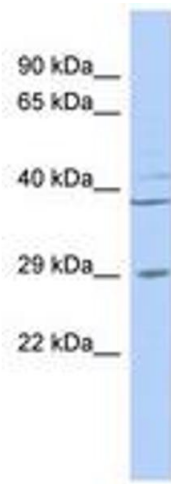
---

Application Notes:	Approved: WB (0.2 - 1 µg/mL)  Usage: Western Blot: Suggested dilution at 1 µg/mL in 5 % skim milk / PBS buffer, and HRP conjugated anti-Rabbit IgG should be diluted in 1: 50,000 - 100,000 as second antibody. ELISA titer in peptide based assay: 1:12500.
Comment:	Target Species of Antibody: Human
Restrictions:	For Research Use only

## Handling

---

Format:	Lyophilized
Reconstitution:	Distilled water
Concentration:	Lot specific
Buffer:	Lyophilized from PBS with 2 % sucrose
Handling Advice:	Avoid repeat freeze-thaw cycles.
Storage:	4 °C, -20 °C
Storage Comment:	Long term: -20°C, the use of 50% glycerol is recommended if storing aliquots in -20°C for long term use (up to 1 year)  Short term (less than 1 week): 4°C. Avoid freeze-thaw cycles.



**Image 1.**