



[Go to Product page](#)

Datasheet for ABIN6741479

anti-alpha KGDHC antibody (N-Term)

1 Image

Overview

Quantity:	100 µL
Target:	alpha KGDHC (alphaKGDHC)
Binding Specificity:	N-Term
Reactivity:	Human, Cow, Horse, Bat, Monkey
Host:	Rabbit
Clonality:	Polyclonal
Conjugate:	This alpha KGDHC antibody is un-conjugated
Application:	Western Blotting (WB)

Product Details

Immunogen:	Synthetic peptide from N-Terminus of human OGDH (Q96DD3, NP_001003941). Percent identity by BLAST analysis: Human, Chimpanzee, Orangutan, Gibbon, Monkey, Marmoset, Panda, Bovine, Bat, Horse (100%), Galago, Mouse, Rat, Elephant, Rabbit, Guinea pig (92%), Opossum, Zebra finch, Chicken (85%). Type of Immunogen: Synthetic peptide
Isotype:	IgG
Specificity:	Human OGDH
Predicted Reactivity:	Percent identity by BLAST analysis: Human, Horse (100%) Mouse, Rat, Rabbit (92%) Chicken (85%).
Purification:	Immunoaffinity purified

Target Details

Target:	alpha KGDHC (alphaKGDHC)
Alternative Name:	OGDH (alphaKGDHC Products)
Background:	Name/Gene ID: OGDH Synonyms: OGDH, AKGDH, E1k, Oxoglutarate decarboxylase, OGDC, OGDC-E1
Gene ID:	4967
NCBI Accession:	NP_001003941
UniProt:	Q02218

Application Details

Application Notes:	Approved: WB (0.2 - 1 µg/mL) Usage: Western Blot: Suggested dilution at 1 µg/mL in 5 % skim milk / PBS buffer, and HRP conjugated anti-Rabbit IgG should be diluted in 1: 50,000 - 100,000 as second antibody. ELISA titer in peptide based assay: 1:12500.
Comment:	Target Species of Antibody: Human
Restrictions:	For Research Use only

Handling

Format:	Lyophilized
Reconstitution:	Distilled water
Concentration:	Lot specific
Buffer:	Lyophilized from PBS with 2 % sucrose
Handling Advice:	Avoid repeat freeze-thaw cycles.
Storage:	4 °C, -20 °C
Storage Comment:	Long term: -20°C, the use of 50% glycerol is recommended if storing aliquots in -20°C for long term use (up to 1 year) Short term (less than 1 week): 4°C. Avoid freeze-thaw cycles.

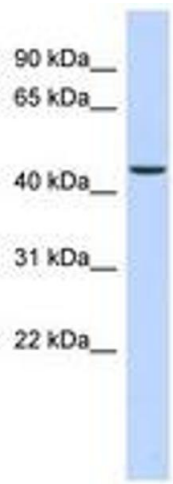


Image 1.