



Datasheet for ABIN6741480
anti-PPP1CA antibody (N-Term)



[Go to Product page](#)

1 Image

Overview

Quantity:	100 µL
Target:	PPP1CA
Binding Specificity:	N-Term
Reactivity:	Human, Mouse, Rat, Rabbit, Cow, Pig, Dog, Guinea Pig, Bat, Monkey
Host:	Rabbit
Clonality:	Polyclonal
Conjugate:	This PPP1CA antibody is un-conjugated
Application:	Western Blotting (WB)

Product Details

Immunogen:	Synthetic peptide from N-Terminus of human PPP1CA (Q07161, NP_001008709). Percent identity by BLAST analysis: Human, Chimpanzee, Gorilla, Gibbon, Monkey, Galago, Marmoset, Mouse, Rat, Panda, Dog, Bovine, Bat, Rabbit, Pig, Opossum, Guinea pig (100%), Elephant, Lizard (92%), Zebra finch (84%). Type of Immunogen: Synthetic peptide
Isotype:	IgG
Specificity:	Human PPP1CA
Predicted Reactivity:	Percent identity by BLAST analysis: Human, Mouse, Bovine, Pig (100%).
Purification:	Immunoaffinity purified

Target Details

Target:	PPP1CA
Alternative Name:	PPP1CA / PP1-alpha (PPP1CA Products)
Background:	Name/Gene ID: PPP1CA Subfamily: PP1 Family: Protein Phosphatase Synonyms: PPP1CA, PP-1A, pp1C alpha, PP1 alpha, PP1-Alpha, PP1alpha, PPP1A, Protein phosphatase 1 alpha
Gene ID:	5499
NCBI Accession:	NP_001008709
UniProt:	P62136
Pathways:	M Phase , Cellular Glucan Metabolic Process , Regulation of Carbohydrate Metabolic Process , Lipid Metabolism

Application Details

Application Notes:	Approved: WB (0.2 - 1 µg/mL) Usage: Western Blot: Suggested dilution at 1 µg/mL in 5 % skim milk / PBS buffer, and HRP conjugated anti-Rabbit IgG should be diluted in 1: 50,000 - 100,000 as second antibody. ELISA titer in peptide based assay: 1:1562500.
Comment:	Target Species of Antibody: Human
Restrictions:	For Research Use only

Handling

Format:	Lyophilized
Reconstitution:	Distilled water
Concentration:	Lot specific
Buffer:	Lyophilized from PBS with 2 % sucrose
Handling Advice:	Avoid repeat freeze-thaw cycles.
Storage:	4 °C, -20 °C

Handling

Storage Comment: Long term: -20°C, the use of 50% glycerol is recommended if storing aliquots in -20°C for long term use (up to 1 year)
Short term (less than 1 week): 4°C. Avoid freeze-thaw cycles.

Images

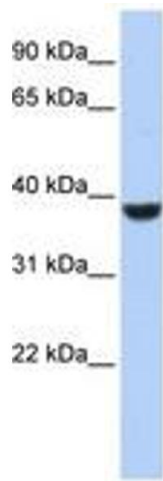


Image 1.