



[Go to Product page](#)

Datasheet for ABIN6741482
anti-SPATA22 antibody (N-Term)

1 Image

Overview

Quantity:	100 µL
Target:	SPATA22
Binding Specificity:	N-Term
Reactivity:	Human, Mouse, Rat, Cow, Guinea Pig, Horse, Monkey
Host:	Rabbit
Clonality:	Polyclonal
Conjugate:	This SPATA22 antibody is un-conjugated
Application:	Western Blotting (WB)

Product Details

Immunogen:	Synthetic peptide from N-Terminus of human SPATA22 (Q8NHS9, NP_115987). Percent identity by BLAST analysis: Human, Chimpanzee, Gorilla, Gibbon, Monkey, Mouse, Rat, Elephant, Bovine, Horse, Guinea pig (100%), Bat, Pig (92%). Type of Immunogen: Synthetic peptide
Isotype:	IgG
Specificity:	Human SPATA22
Predicted Reactivity:	Percent identity by BLAST analysis: Human, Mouse, Rat, Horse (100%) Pig (92%).
Purification:	Immunoaffinity purified

Target Details

Target: SPATA22

Alternative Name: SPATA22 ([SPATA22 Products](#))

Background: Name/Gene ID: SPATA22

Synonyms: SPATA22, NYDSP20, Spermatogenesis associated 22, NYD-SP20

Gene ID: 84690

NCBI Accession: [NP_115987](#)

Application Details

Application Notes: Approved: WB (0.2 - 1 µg/mL)

Usage: Western Blot: Suggested dilution at 1 µg/mL in 5 % skim milk / PBS buffer, and HRP conjugated anti-Rabbit IgG should be diluted in 1: 50,000 - 100,000 as second antibody. ELISA titer in peptide based assay: 1:1562500.

Comment: Target Species of Antibody: Human

Restrictions: For Research Use only

Handling

Format: Lyophilized

Reconstitution: Distilled water

Concentration: Lot specific

Buffer: Lyophilized from PBS with 2 % sucrose

Handling Advice: Avoid repeat freeze-thaw cycles.

Storage: 4 °C, -20 °C

Storage Comment: Long term: -20°C, the use of 50% glycerol is recommended if storing aliquots in -20°C for long term use (up to 1 year)

Short term (less than 1 week): 4°C. Avoid freeze-thaw cycles.

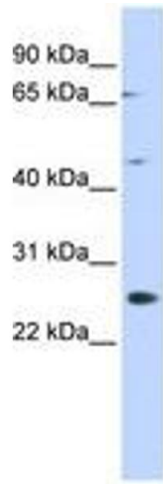


Image 1.