

Datasheet for ABIN6741485
anti-LSP1 antibody (AA 36-85)



[Go to Product page](#)

1 Image

Overview

Quantity:	100 µL
Target:	LSP1
Binding Specificity:	AA 36-85
Reactivity:	Human, Dog
Host:	Rabbit
Clonality:	Polyclonal
Conjugate:	This LSP1 antibody is un-conjugated
Application:	Western Blotting (WB)

Product Details

Immunogen:	Synthetic peptide located between aa36-85 of human LSP1 (P33241, NP_002330). Percent identity by BLAST analysis: Human, Gorilla (100%), Guinea pig (90%), Elephant, Dog (83%), Galago (80%). Type of Immunogen: Synthetic peptide
Isotype:	IgG
Specificity:	Human LSP1
Predicted Reactivity:	Percent identity by BLAST analysis: Human (100%) Guinea pig (90%) Dog (83%).
Purification:	Immunoaffinity purified

Target Details

Target:	LSP1
Alternative Name:	LSP1 (LSP1 Products)
Background:	Name/Gene ID: LSP1 Synonyms: LSP1, 47 kDa actin-binding protein, 47 kDa actin binding protein, 52 kDa phosphoprotein, Leukocyte-specific protein 1, Lymphocyte-specific protein 1, Pp52, WP34
Gene ID:	4046
NCBI Accession:	NP_002330
UniProt:	P33241

Application Details

Application Notes:	Approved: WB (0.2 - 1 µg/mL) Usage: Western Blot: Suggested dilution at 1 µg/mL in 5 % skim milk / PBS buffer, and HRP conjugated anti-Rabbit IgG should be diluted in 1: 50,000 - 100,000 as second antibody. ELISA titer in peptide based assay: 1:62500.
Comment:	Target Species of Antibody: Human
Restrictions:	For Research Use only

Handling

Format:	Lyophilized
Reconstitution:	Distilled water
Concentration:	Lot specific
Buffer:	Lyophilized from PBS with 2 % sucrose
Handling Advice:	Avoid repeat freeze-thaw cycles.
Storage:	4 °C,-20 °C
Storage Comment:	Long term: -20°C, the use of 50% glycerol is recommended if storing aliquots in -20°C for long term use (up to 1 year) Short term (less than 1 week): 4°C. Avoid freeze-thaw cycles.

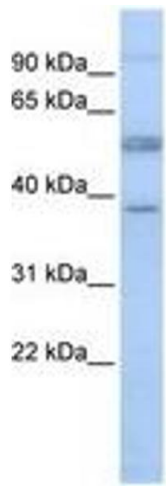


Image 1.