



[Go to Product page](#)

Datasheet for ABIN6741486
anti-WDR3 antibody (C-Term)

1 Image

Overview

Quantity:	100 µL
Target:	WDR3
Binding Specificity:	C-Term
Reactivity:	Human, Cow, Rat, Zebrafish (Danio rerio), Horse, Pig, Rabbit, Bat, Monkey
Host:	Rabbit
Clonality:	Polyclonal
Conjugate:	This WDR3 antibody is un-conjugated
Application:	Western Blotting (WB)

Product Details

Immunogen:	Synthetic peptide from C-Terminus of human WDR3 (Q9UNX4, NP_006775). Percent identity by BLAST analysis: Human, Chimpanzee, Gorilla, Gibbon, Monkey, Galago, Marmoset, Panda, Bovine, Bat, Rabbit, Horse, Pig, Opossum (100%), Elephant, Guinea pig (93%), Xenopus (92%), Turkey, Chicken (85%), Rat (80%). Type of Immunogen: Synthetic peptide
Isotype:	IgG
Specificity:	Human WDR3
Predicted Reactivity:	Percent identity by BLAST analysis: Human, Bovine, Rabbit, Horse, Pig (100%) Guinea pig (93%) Xenopus (92%) Chicken (85%) Rat (80%).
Purification:	Immunoaffinity purified

Target Details

Target:	WDR3
Alternative Name:	WDR3 (WDR3 Products)
Background:	Name/Gene ID: WDR3 Synonyms: WDR3, DIP2, DJ776P7.2 (WD repeat domain 3), WD repeat domain 3, UTP12, WD repeat-containing protein 3
Gene ID:	10885
NCBI Accession:	NP_006775
UniProt:	Q9UNX4

Application Details

Application Notes:	Approved: WB (0.2 - 1 µg/mL) Usage: Western Blot: Suggested dilution at 1 µg/mL in 5 % skim milk / PBS buffer, and HRP conjugated anti-Rabbit IgG should be diluted in 1: 50,000 - 100,000 as second antibody. ELISA titer in peptide based assay: 1:1562500.
Comment:	Target Species of Antibody: Human
Restrictions:	For Research Use only

Handling

Format:	Lyophilized
Reconstitution:	Distilled water
Concentration:	Lot specific
Buffer:	Lyophilized from PBS with 2 % sucrose
Handling Advice:	Avoid repeat freeze-thaw cycles.
Storage:	4 °C,-20 °C
Storage Comment:	Long term: -20°C, the use of 50% glycerol is recommended if storing aliquots in -20°C for long term use (up to 1 year) Short term (less than 1 week): 4°C. Avoid freeze-thaw cycles.

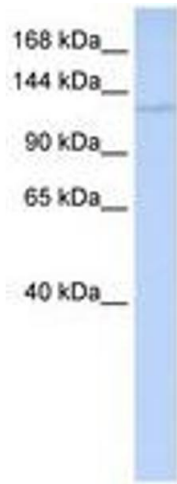


Image 1.