



Datasheet for ABIN6741498

## anti-Serotonin Receptor 5A antibody (N-Term)



[Go to Product page](#)

### 1 Image

#### Overview

Quantity:	100 µL
Target:	Serotonin Receptor 5A (HTR5A)
Binding Specificity:	N-Term
Reactivity:	Human, Guinea Pig
Host:	Rabbit
Clonality:	Polyclonal
Conjugate:	This Serotonin Receptor 5A antibody is un-conjugated
Application:	Western Blotting (WB)

#### Product Details

Immunogen:	Synthetic peptide from N-Terminus of human HTR5A (P47898, NP_076917). Percent identity by BLAST analysis: Human, Chimpanzee, Gorilla, Gibbon, Monkey (100%), Marmoset (92%), Guinea pig (80%).  Type of Immunogen: Synthetic peptide
Isotype:	IgG
Specificity:	Human HTR5A / 5-HT35A
Predicted Reactivity:	Percent identity by BLAST analysis: Human (100%) Guinea pig (80%).
Purification:	Immunoaffinity purified

## Target Details

---

Target:	Serotonin Receptor 5A (HTR5A)
Alternative Name:	HTR5A / 5-HT5A Receptor ( <a href="#">HTR5A Products</a> )
Background:	Name/Gene ID: HTR5A Subfamily: Serotonin Family: GPCR  Synonyms: HTR5A, 5-HT-5, 5-HT-5A, 5-HT5A, 5-HT5a receptor, 5-hydroxytryptamine5a, Serotonin 5-HT5a receptor, Serotonin 5a receptor, Serotonin receptor 5A
Gene ID:	3361
NCBI Accession:	<a href="#">NP_076917</a>
UniProt:	<a href="#">P47898</a>
Pathways:	<a href="#">JAK-STAT Signaling</a>

## Application Details

---

Application Notes:	Approved: WB (0.2 - 1 µg/mL)  Usage: Western Blot: Suggested dilution at 1 µg/mL in 5 % skim milk / PBS buffer, and HRP conjugated anti-Rabbit IgG should be diluted in 1: 50,000 - 100,000 as second antibody. ELISA titer in peptide based assay: 1:312500.
Comment:	Target Species of Antibody: Human
Restrictions:	For Research Use only

## Handling

---

Format:	Lyophilized
Reconstitution:	Distilled water
Concentration:	Lot specific
Buffer:	Lyophilized from PBS with 2 % sucrose
Handling Advice:	Avoid repeat freeze-thaw cycles.
Storage:	4 °C,-20 °C
Storage Comment:	Long term: -20°C, the use of 50% glycerol is recommended if storing aliquots in -20°C for long

## Handling

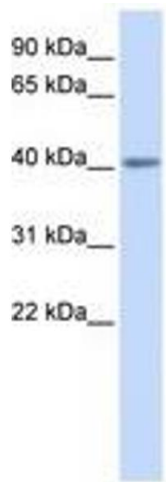
---

term use (up to 1 year)

Short term (less than 1 week): 4°C. Avoid freeze-thaw cycles.

## Images

---



**Image 1.**