

Datasheet for ABIN6741535  
**anti-FHL1 antibody (AA 51-100)**

## 3 Images

[Go to Product page](#)

## Overview

Quantity:	100 µL
Target:	FHL1
Binding Specificity:	AA 51-100
Reactivity:	Human, Mouse, Rat, Dog, Cow, Pig, Guinea Pig, Rabbit, Sheep, Hamster
Host:	Rabbit
Clonality:	Polyclonal
Conjugate:	This FHL1 antibody is un-conjugated
Application:	Western Blotting (WB), Immunohistochemistry (IHC), Immunohistochemistry (Paraffin-embedded Sections) (IHC (p))

## Product Details

Brand:	IHC-plus™
Immunogen:	Synthetic peptide located between aa51-100 of human FHL1 (Q6IB30, NP_001440). Percent identity by BLAST analysis: Human, Chimpanzee, Galago, Mouse, Rat, Sheep, Hamster, Dog, Bovine, Rabbit, Pig, Guinea pig (100%), Horse, Platypus, Xenopus (92%), Gorilla, Orangutan, Gibbon, Monkey, Marmoset (91%), Elephant, Turkey, Zebra finch (83%).  Type of Immunogen: Synthetic peptide
Isotype:	IgG
Specificity:	Human FHL1
Predicted Reactivity:	Percent identity by BLAST analysis: Mouse, Rat, Sheep, Dog, Bovine, Rabbit, Pig, Guinea pig

## Product Details

(100%) Horse (92%) Human, Xenopus (91%).

Purification: Immunoaffinity purified

## Target Details

Target: FHL1

Alternative Name: SLIM / FHL1 ([FHL1 Products](#))

Background: Name/Gene ID: FHL1

Synonyms: FHL1, BA535K18.1, FHL1B, FHL1A, FLH1A, Four and a half LIM domains 1, FHL-1, KYOT, Skeletal muscle LIM-protein 1, SLIM-1, Skeletal muscle LIM-protein1, SLIMMER, XMPMA, KYO-T, LIM protein SLIMMER, SLIM, SLIM1

Gene ID: 2273

NCBI Accession: [NP\\_001440](#)

UniProt: [Q13642](#)

## Application Details

Application Notes: Approved: IHC, IHC-P (5 µg/mL), WB (0.2 - 1 µg/mL)

Usage: Immunohistochemistry: This antibody was validated for use in immunohistochemistry on a panel of 21 formalin-fixed, paraffin-embedded (FFPE) human tissues after heat induced antigen retrieval in pH 6.0 citrate buffer. After incubation with the primary antibody, slides were incubated with biotinylated secondary antibody, followed by alkaline phosphatase-streptavidin and chromogen. The stained slides were evaluated by a pathologist to confirm staining specificity. The optimal working concentration for this antibody was determined to be 5 µg/mL. Western Blot: Suggested dilution at 1 µg/mL in 5 % skim milk / PBS buffer, and HRP conjugated anti-Rabbit IgG should be diluted in 1:50000 - 100000 as second antibody. ELISA titer in peptide based assay: 1:62500.

Comment: Target Species of Antibody: Human

Restrictions: For Research Use only

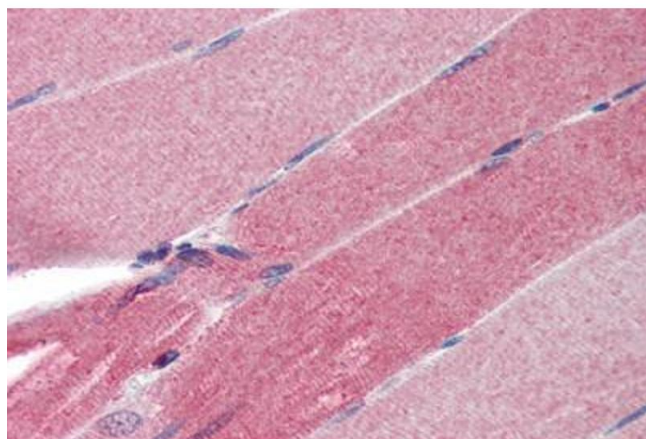
## Handling

Format: Lyophilized

## Handling

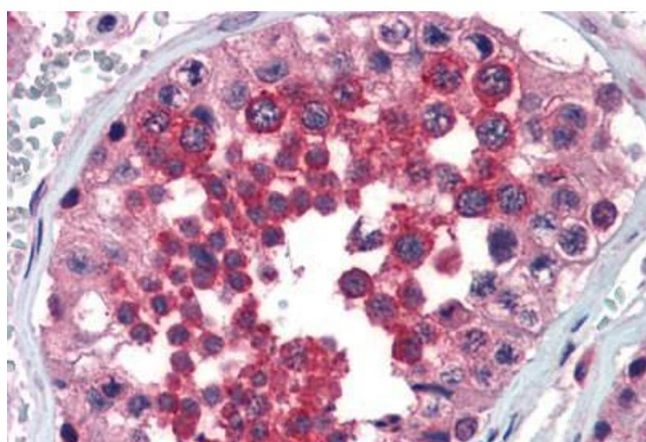
Reconstitution:	Distilled water
Concentration:	Lot specific
Buffer:	Lyophilized from PBS with 2 % sucrose
Handling Advice:	Avoid repeat freeze-thaw cycles.
Storage:	4 °C, -20 °C
Storage Comment:	Long term: -20°C, the use of 50% glycerol is recommended if storing aliquots in -20°C for long term use (up to 1 year) Short term (less than 1 week): 4°C. Avoid freeze-thaw cycles.

## Images



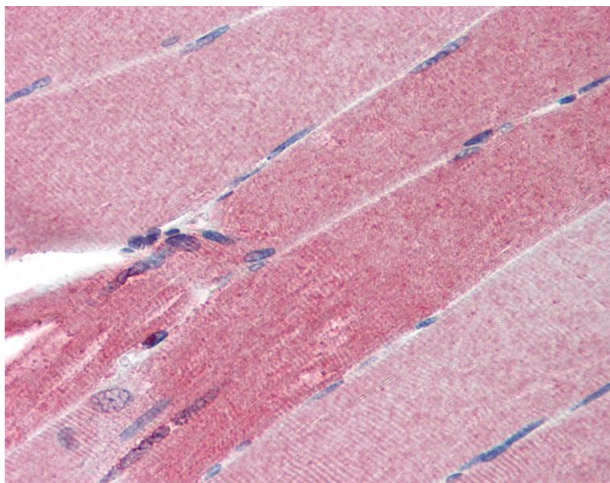
### Immunohistochemistry (Paraffin-embedded Sections)

**Image 1.** Human Skeletal Muscle (formalin-fixed, paraffin-embedded) stained with FHL1 antibody ABIN462171 followed by biotinylated goat anti-rabbit IgG secondary antibody ABIN481713, alkaline phosphatase-streptavidin and chromogen.



### Immunohistochemistry (Paraffin-embedded Sections)

**Image 2.** Human Testis (formalin-fixed, paraffin-embedded) stained with FHL1 antibody ABIN462171 followed by biotinylated goat anti-rabbit IgG secondary antibody ABIN481713, alkaline phosphatase-streptavidin and chromogen.



#### Immunohistochemistry

**Image 3.** Anti-FHL1 antibody IHC of human skeletal muscle. Immunohistochemistry of formalin-fixed, paraffin-embedded tissue after heat-induced antigen retrieval. Antibody concentration 5 ug/ml. This image was taken for the unconjugated form of this product. O ...