

Datasheet for ABIN6741536
anti-TFCP2L1 antibody (AA 20-69)

3 Images

[Go to Product page](#)

Overview

Quantity:	100 µL
Target:	TFCP2L1
Binding Specificity:	AA 20-69
Reactivity:	Human, Dog, Cow, Rabbit, Bat, Monkey
Host:	Rabbit
Clonality:	Polyclonal
Conjugate:	This TFCP2L1 antibody is un-conjugated
Application:	Western Blotting (WB), Immunohistochemistry (IHC), Immunohistochemistry (Paraffin-embedded Sections) (IHC (p))

Product Details

Brand:	IHC-plus™
Immunogen:	Synthetic peptide located between aa20-69 of human TFCP2L1 (Q9NZI6, NP_055368). Percent identity by BLAST analysis: Human, Chimpanzee, Gorilla, Orangutan, Gibbon, Monkey, Galago, Marmoset, Elephant, Dog, Bovine, Bat, Rabbit (100%), Mouse, Rat, Horse, Pig, Opossum, Guinea pig, Turkey, Chicken, Platypus (92%), Zebra finch (85%). Type of Immunogen: Synthetic peptide
Isotype:	IgG
Specificity:	Human TFCP2L1 / CRTR1
Predicted Reactivity:	Percent identity by BLAST analysis: Human, Dog, Bovine, Rabbit (100%) Mouse, Rat, Horse, Pig,

Product Details

Guinea pig, Chicken (92%).

Purification: Immunoaffinity purified

Target Details

Target: TFCP2L1

Alternative Name: CRTR1 / TFCP2L1 ([TFCP2L1 Products](#))

Background: Name/Gene ID: TFCP2L1

Synonyms: TFCP2L1, CRTR1, LBP-9, CRTR-1, LBP9, Transcription factor LBP-9

Gene ID: 29842

NCBI Accession: [NP_055368](#)

UniProt: [Q9NZI6](#)

Application Details

Application Notes: Approved: IHC, IHC-P (5 µg/mL), WB (0.2 - 1 µg/mL)

Usage: Immunohistochemistry: This antibody was validated for use in immunohistochemistry on a panel of 21 formalin-fixed, paraffin-embedded (FFPE) human tissues after heat induced antigen retrieval in pH 6.0 citrate buffer. After incubation with the primary antibody, slides were incubated with biotinylated secondary antibody, followed by alkaline phosphatase-streptavidin and chromogen. The stained slides were evaluated by a pathologist to confirm staining specificity. The optimal working concentration for this antibody was determined to be 5 µg/mL.

Comment: Target Species of Antibody: Human

Restrictions: For Research Use only

Handling

Format: Lyophilized

Reconstitution: After adding water, will consist of PBS buffer with 2 % sucrose

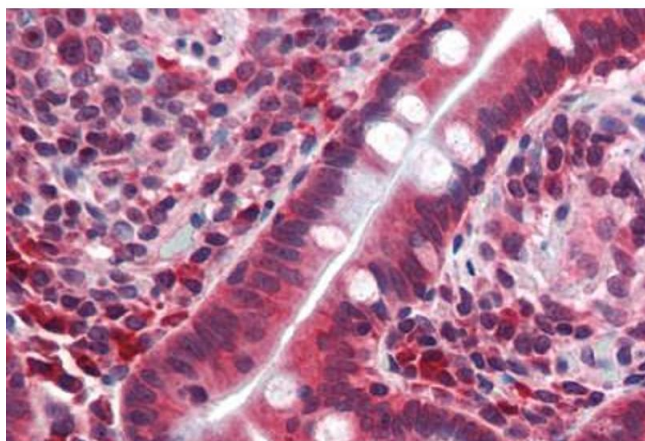
Concentration: Lot specific

Buffer: Lyophilized from PBS with 2 % sucrose

Handling

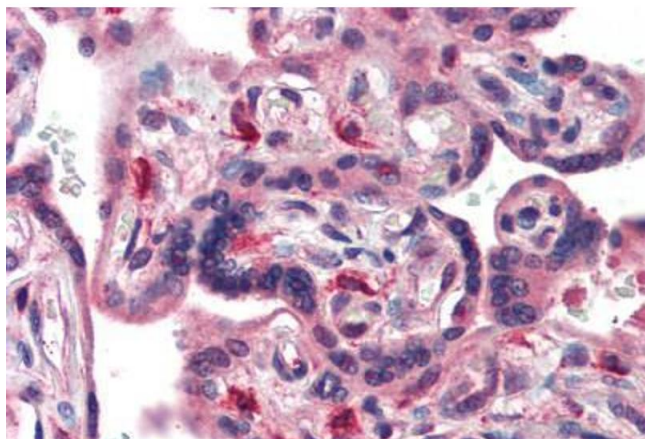
Handling Advice:	Avoid repeat freeze-thaw cycles.
Storage:	4 °C,-20 °C
Storage Comment:	Long term: -20°C, the use of 50% glycerol is recommended if storing aliquots in -20°C for long term use (up to 1 year) Short term (less than 1 week): 4°C. Avoid freeze-thaw cycles.

Images



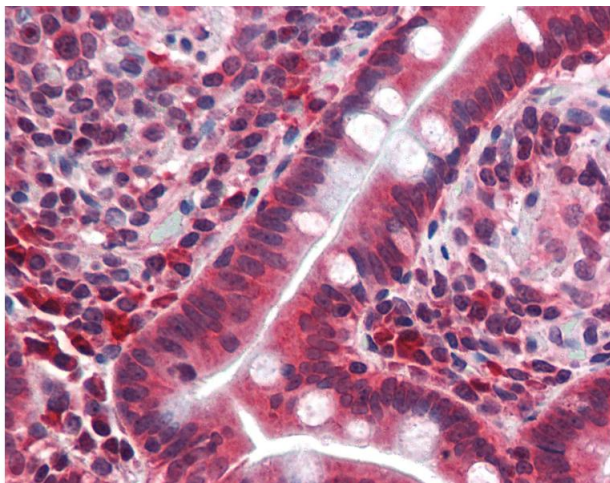
Immunohistochemistry (Paraffin-embedded Sections)

Image 1. Human Small Intestine (formalin-fixed, paraffin-embedded) stained with TFCP2L1 antibody ABIN462172 followed by biotinylated goat anti-rabbit IgG secondary antibody ABIN481713, alkaline phosphatase-streptavidin and chromogen.



Immunohistochemistry (Paraffin-embedded Sections)

Image 2. Human Placenta (formalin-fixed, paraffin-embedded) stained with TFCP2L1 antibody ABIN462172 followed by biotinylated goat anti-rabbit IgG secondary antibody ABIN481713, alkaline phosphatase-streptavidin and chromogen.



Immunohistochemistry

Image 3. Anti-TFCP2L1 / CRTR1 antibody IHC of human small intestine. Immunohistochemistry of formalin-fixed, paraffin-embedded tissue after heat-induced antigen retrieval. Antibody concentration 5 ug/ml. This image was taken for the unconjugated form of this ...