

Datasheet for ABIN6741537
anti-NAB1 antibody (AA 71-120)

3 Images

[Go to Product page](#)

Overview

Quantity:	100 µL
Target:	NAB1
Binding Specificity:	AA 71-120
Reactivity:	Human, Rat, Mouse, Cow, Guinea Pig, Horse, Rabbit, Zebrafish (Danio rerio), Bat, Hamster, Monkey, Chicken, Xenopus laevis
Host:	Rabbit
Clonality:	Polyclonal
Conjugate:	This NAB1 antibody is un-conjugated
Application:	Western Blotting (WB), Immunohistochemistry (IHC), Immunohistochemistry (Paraffin-embedded Sections) (IHC (p))

Product Details

Brand:	IHC-plus™
Immunogen:	Synthetic peptide located between aa71-120 of human NAB1 (Q13506, NP_005957). Percent identity by BLAST analysis: Human, Chimpanzee, Gorilla, Orangutan, Gibbon, Monkey, Galago, Marmoset, Mouse, Rat, Hamster, Panda, Bovine, Bat, Rabbit, Horse, Opossum, Guinea pig, Turkey, Zebra finch, Chicken, Lizard, Xenopus (100%), Elephant (92%), Dog (91%), Stickleback, Zebrafish (84%). Type of Immunogen: Synthetic peptide
Isotype:	IgG

Product Details

Specificity:	Human NAB1
Predicted Reactivity:	Percent identity by BLAST analysis: Human, Mouse, Rat, Bovine, Rabbit, Horse, Guinea pig, Chicken, Xenopus (100%) Dog (91%) Zebrafish (84%).
Purification:	Immunoaffinity purified

Target Details

Target:	NAB1
Alternative Name:	NAB1 (NAB1 Products)
Background:	Name/Gene ID: NAB1 Synonyms: NAB1, EGR1 binding protein 1, EGR-1-binding protein 1, NGFI-A-binding protein 1
Gene ID:	4664
NCBI Accession:	NP_005957
UniProt:	Q13506

Application Details

Application Notes:	Approved: IHC, IHC-P (5 µg/mL), WB (0.2 - 1 µg/mL) Usage: Immunohistochemistry: This antibody was validated for use in immunohistochemistry on a panel of 21 formalin-fixed, paraffin-embedded (FFPE) human tissues after heat induced antigen retrieval in pH 6.0 citrate buffer. After incubation with the primary antibody, slides were incubated with biotinylated secondary antibody, followed by alkaline phosphatase-streptavidin and chromogen. The stained slides were evaluated by a pathologist to confirm staining specificity. The optimal working concentration for this antibody was determined to be 5 µg/mL.
Comment:	Target Species of Antibody: Human
Restrictions:	For Research Use only

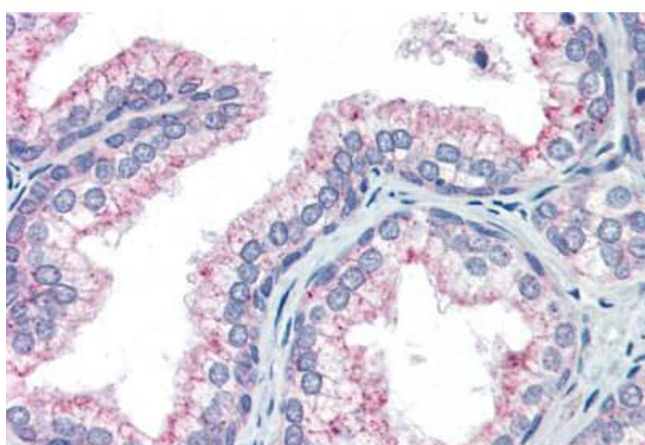
Handling

Format:	Lyophilized
Reconstitution:	After adding water, will consist of PBS buffer with 2 % sucrose
Concentration:	Lot specific

Handling

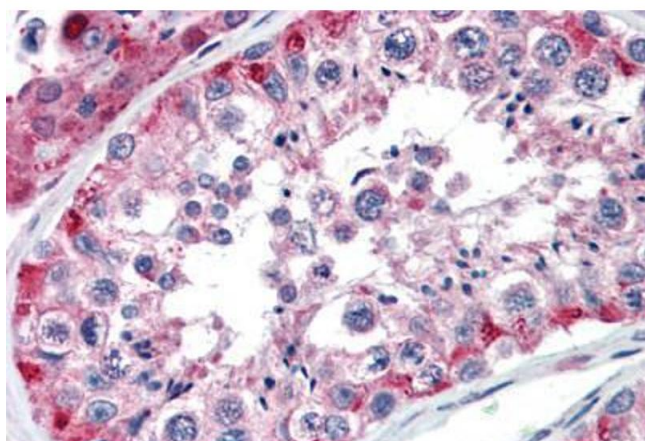
Buffer:	Lyophilized from PBS with 2 % sucrose
Handling Advice:	Avoid repeat freeze-thaw cycles.
Storage:	4 °C, -20 °C
Storage Comment:	Long term: -20°C, the use of 50% glycerol is recommended if storing aliquots in -20°C for long term use (up to 1 year) Short term (less than 1 week): 4°C. Avoid freeze-thaw cycles.

Images



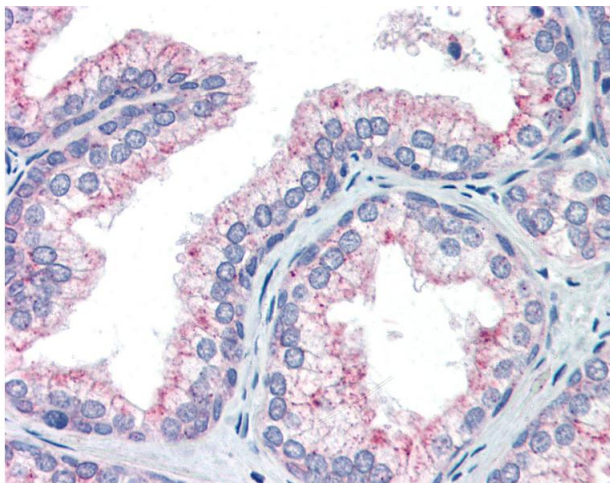
Immunohistochemistry (Paraffin-embedded Sections)

Image 1. Human Prostate (formalin-fixed, paraffin-embedded) stained with NAB1 antibody ABIN462173 followed by biotinylated goat anti-rabbit IgG secondary antibody ABIN481713, alkaline phosphatase-streptavidin and chromogen.



Immunohistochemistry (Paraffin-embedded Sections)

Image 2. Human Testis (formalin-fixed, paraffin-embedded) stained with NAB1 antibody ABIN462173 followed by biotinylated goat anti-rabbit IgG secondary antibody ABIN481713, alkaline phosphatase-streptavidin and chromogen.



Immunohistochemistry

Image 3. Anti-NAB1 antibody IHC of human prostate. Immunohistochemistry of formalin-fixed, paraffin-embedded tissue after heat-induced antigen retrieval. Antibody concentration 5 ug/ml. This image was taken for the unconjugated form of this product. Other fo ...