

Datasheet for ABIN6741543

**anti-Ceramide Synthase 2 antibody (AA 72-121)****3** Images[Go to Product page](#)

## Overview

Quantity:	100 µL
Target:	Ceramide Synthase 2 (CERS2)
Binding Specificity:	AA 72-121
Reactivity:	Human, Guinea Pig, Pig, Hamster
Host:	Rabbit
Clonality:	Polyclonal
Conjugate:	This Ceramide Synthase 2 antibody is un-conjugated
Application:	Western Blotting (WB), Immunohistochemistry (IHC), Immunohistochemistry (Paraffin-embedded Sections) (IHC (p))

## Product Details

Brand:	IHC-plus™
Immunogen:	Synthetic peptide located between aa72-121 of human CERS2 (Q96G23, NP_071358). Percent identity by BLAST analysis: Human, Chimpanzee, Gorilla, Gibbon, Monkey, Galago, Hamster, Pig, Guinea pig (100%), Orangutan, Marmoset, Mouse, Rat, Elephant, Panda, Dog, Rabbit, Horse, Opossum (92%), Bovine, Bat (85%).  Type of Immunogen: Synthetic peptide
Isotype:	IgG
Specificity:	Human LASS2
Predicted Reactivity:	Percent identity by BLAST analysis: Pig (100%) Mouse, Horse (92%).

## Product Details

Purification: Immunoaffinity purified

## Target Details

Target: Ceramide Synthase 2 (CERS2)

Alternative Name: L3 / LASS2 ([CERS2 Products](#))

Background: Name/Gene ID: CERS2

Synonyms: CERS2, Ceramide synthase 2, LAG1 longevity assurance 2, L3, LASS2, SP260, TMSG1

Gene ID: 29956

NCBI Accession: [NP\\_071358](#)

UniProt: [Q96G23](#)

## Application Details

Application Notes: Approved: IHC, IHC-P (5 µg/mL), WB (0.2 - 1 µg/mL)

Usage: Immunohistochemistry: This antibody was validated for use in immunohistochemistry on a panel of 21 formalin-fixed, paraffin-embedded (FFPE) human tissues after heat induced antigen retrieval in pH 6.0 citrate buffer. After incubation with the primary antibody, slides were incubated with biotinylated secondary antibody, followed by alkaline phosphatase-streptavidin and chromogen. The stained slides were evaluated by a pathologist to confirm staining specificity. The optimal working concentration for this antibody was determined to be 5 µg/mL. Western Blot: Suggested dilution at 1 µg/mL in 5 % skim milk / PBS buffer, and HRP conjugated anti-Rabbit IgG should be diluted in 1:50000 - 100000 as second antibody. ELISA titer in peptide based assay: 1:312500.

Comment: Target Species of Antibody: Human

Restrictions: For Research Use only

## Handling

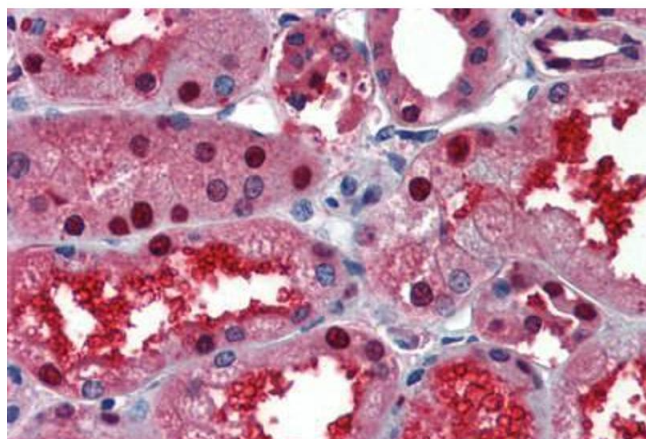
Format: Lyophilized

Reconstitution: Distilled water

## Handling

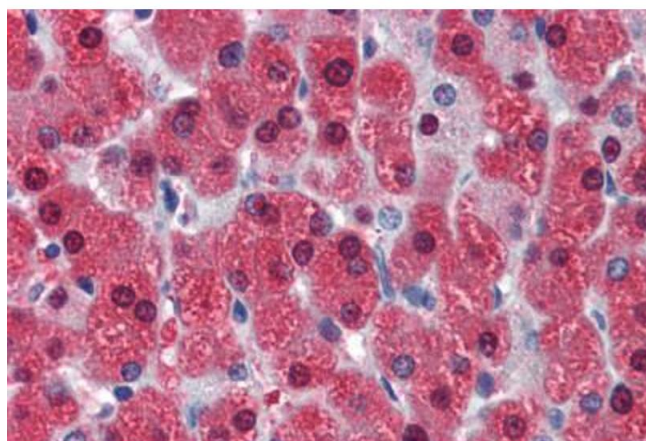
Concentration:	Lot specific
Buffer:	Lyophilized from PBS with 2 % sucrose
Handling Advice:	Avoid repeat freeze-thaw cycles.
Storage:	4 °C,-20 °C
Storage Comment:	Long term: -20°C, the use of 50% glycerol is recommended if storing aliquots in -20°C for long term use (up to 1 year) Short term (less than 1 week): 4°C. Avoid freeze-thaw cycles.

## Images



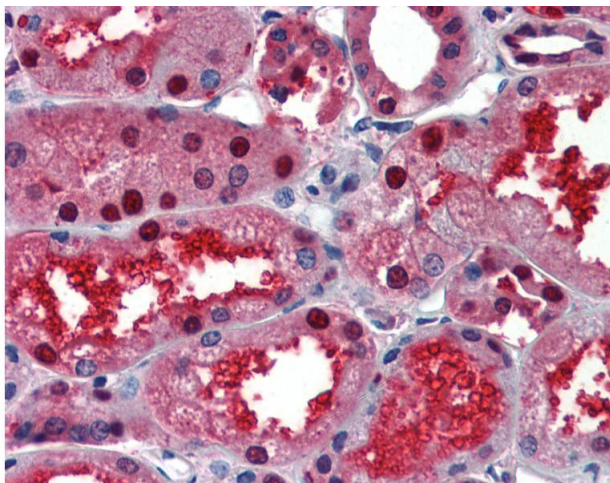
### Immunohistochemistry (Paraffin-embedded Sections)

**Image 1.** Human Kidney (formalin-fixed, paraffin-embedded) stained with LASS2 antibody ABIN462181 followed by biotinylated goat anti-rabbit IgG secondary antibody ABIN481713, alkaline phosphatase-streptavidin and chromogen.



### Immunohistochemistry (Paraffin-embedded Sections)

**Image 2.** Human Liver (formalin-fixed, paraffin-embedded) stained with LASS2 antibody ABIN462181 followed by biotinylated goat anti-rabbit IgG secondary antibody ABIN481713, alkaline phosphatase-streptavidin and chromogen.



#### Immunohistochemistry

**Image 3.** Anti-LASS2 antibody IHC of human kidney. Immunohistochemistry of formalin-fixed, paraffin-embedded tissue after heat-induced antigen retrieval. Antibody concentration 5 ug/ml. This image was taken for the unconjugated form of this product. Other for ...