

Datasheet for ABIN6741545  
**anti-NFIX antibody (AA 181-230)**

## 3 Images

[Go to Product page](#)

## Overview

Quantity:	100 µL
Target:	NFIX (MLZE)
Binding Specificity:	AA 181-230
Reactivity:	Human, Rat, Mouse, Dog, Rabbit, Cow, Guinea Pig, Horse, Bat, Hamster, Monkey, Pig
Host:	Rabbit
Clonality:	Polyclonal
Conjugate:	This NFIX antibody is un-conjugated
Application:	Western Blotting (WB), Immunohistochemistry (IHC), Immunohistochemistry (Paraffin-embedded Sections) (IHC (p))

## Product Details

Brand:	IHC-plus™
Immunogen:	Synthetic peptide located between aa181-230 of human NFIX (Q14938-3, NP_002492). Percent identity by BLAST analysis: Human, Chimpanzee, Gorilla, Gibbon, Monkey, Galago, Marmoset, Mouse, Rat, Hamster, Elephant, Dog, Bovine, Bat, Rabbit, Horse, Pig, Opossum, Guinea pig, Stickleback (100%), Lizard, Zebrafish (92%).  Type of Immunogen: Synthetic peptide
Isotype:	IgG
Specificity:	Human NFIX
Predicted Reactivity:	Percent identity by BLAST analysis: Human, Mouse, Rat, Dog, Bovine, Rabbit, Horse, Pig, Guinea

## Product Details

pig (100%) Zebrafish (92%).

Purification: Immunoaffinity purified

## Target Details

Target: NFIX (MLZE)

Alternative Name: NF1A / NFIX ([MLZE Products](#))

Background: Name/Gene ID: NFIX

Synonyms: NFIX, CTF, NF1A, NFI-X, NF-I/X, Nuclear factor I/X, TGGCA-binding protein, Nuclear factor 1/X, MRSHSS, NF1-X, Nuclear factor 1 X-type, SOTOS2

Gene ID: 4784

NCBI Accession: [NP\\_002492](#)

UniProt: [Q14938](#)

Pathways: [Skeletal Muscle Fiber Development](#)

## Application Details

Application Notes: Approved: IHC, IHC-P (5 µg/mL), WB (0.2 - 1 µg/mL)

Usage: Immunohistochemistry: This antibody was validated for use in immunohistochemistry on a panel of 21 formalin-fixed, paraffin-embedded (FFPE) human tissues after heat induced antigen retrieval in pH 6.0 citrate buffer. After incubation with the primary antibody, slides were incubated with biotinylated secondary antibody, followed by alkaline phosphatase-streptavidin and chromogen. The stained slides were evaluated by a pathologist to confirm staining specificity. The optimal working concentration for this antibody was determined to be 5 µg/mL.

Comment: Target Species of Antibody: Human

Restrictions: For Research Use only

## Handling

Format: Lyophilized

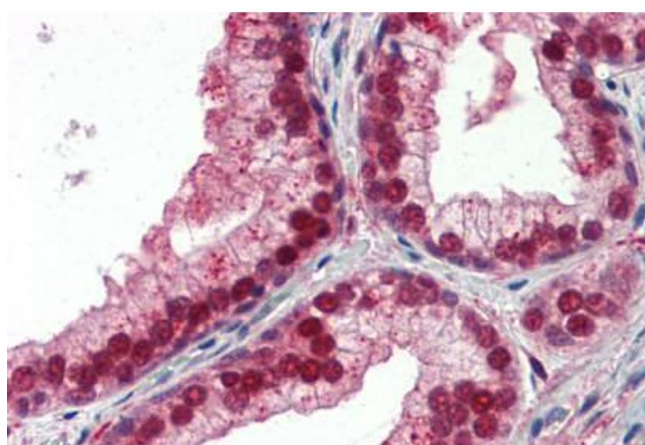
Reconstitution: Distilled water

Concentration: Lot specific

## Handling

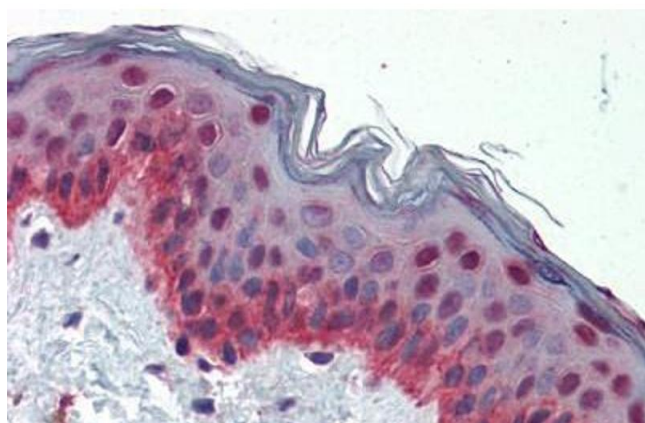
Buffer:	Lyophilized from PBS with 2 % sucrose
Handling Advice:	Avoid repeat freeze-thaw cycles.
Storage:	4 °C, -20 °C
Storage Comment:	Long term: -20°C, the use of 50% glycerol is recommended if storing aliquots in -20°C for long term use (up to 1 year) Short term (less than 1 week): 4°C. Avoid freeze-thaw cycles.

## Images



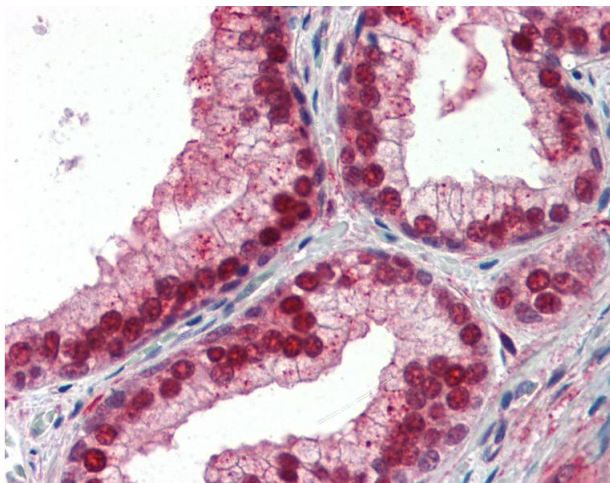
### Immunohistochemistry (Paraffin-embedded Sections)

**Image 1.** Human Prostate (formalin-fixed, paraffin-embedded) stained with NFIX antibody ABIN462183 followed by biotinylated goat anti-rabbit IgG secondary antibody ABIN481713, alkaline phosphatase-streptavidin and chromogen.



### Immunohistochemistry (Paraffin-embedded Sections)

**Image 2.** Human Skin (formalin-fixed, paraffin-embedded) stained with NFIX antibody ABIN462183 followed by biotinylated goat anti-rabbit IgG secondary antibody ABIN481713, alkaline phosphatase-streptavidin and chromogen.



#### Immunohistochemistry

**Image 3.** Anti-NFIX antibody IHC of human prostate. Immunohistochemistry of formalin-fixed, paraffin-embedded tissue after heat-induced antigen retrieval. Antibody concentration 5 ug/ml. This image was taken for the unconjugated form of this product. Other fo ...