

Datasheet for ABIN6741546
anti-NOTCH4 antibody (AA 371-420)

3 Images

[Go to Product page](#)

Overview

Quantity:	100 µL
Target:	NOTCH4
Binding Specificity:	AA 371-420
Reactivity:	Human, Cow, Horse, Guinea Pig, Pig
Host:	Rabbit
Clonality:	Polyclonal
Conjugate:	This NOTCH4 antibody is un-conjugated
Application:	Western Blotting (WB), Immunohistochemistry (IHC), Immunohistochemistry (Paraffin-embedded Sections) (IHC (p))

Product Details

Brand:	IHC-plus™
Immunogen:	Synthetic peptide located between aa371-420 of human NOTCH4 (Q99466-2). Percent identity by BLAST analysis: Human, Chimpanzee, Gorilla, Bovine, Horse, Pig (100%), Monkey, Marmoset (92%), Gibbon, Guinea pig (85%). Type of Immunogen: Synthetic peptide
Isotype:	IgG
Specificity:	Human NOTCH4
Predicted Reactivity:	Percent identity by BLAST analysis: Human, Bovine, Horse, Pig (100%) Guinea pig (85%).
Purification:	Immunoaffinity purified

Target Details

Target:	NOTCH4
Alternative Name:	NOTCH4 (NOTCH4 Products)
Background:	Name/Gene ID: NOTCH4 Synonyms: NOTCH4, HNotch4, Notch (Drosophila) homolog 4, Notch homolog 4 (Drosophila), Notch homolog 4, INT3, Notch 4
Gene ID:	4855
UniProt:	Q99466
Pathways:	Notch Signaling

Application Details

Application Notes:	Approved: IHC, IHC-P (5 µg/mL), WB (0.2 - 1 µg/mL) Usage: Immunohistochemistry: This antibody was validated for use in immunohistochemistry on a panel of 21 formalin-fixed, paraffin-embedded (FFPE) human tissues after heat induced antigen retrieval in pH 6.0 citrate buffer. After incubation with the primary antibody, slides were incubated with biotinylated secondary antibody, followed by alkaline phosphatase-streptavidin and chromogen. The stained slides were evaluated by a pathologist to confirm staining specificity. The optimal working concentration for this antibody was determined to be 5 µg/mL.
Comment:	Target Species of Antibody: Human
Restrictions:	For Research Use only

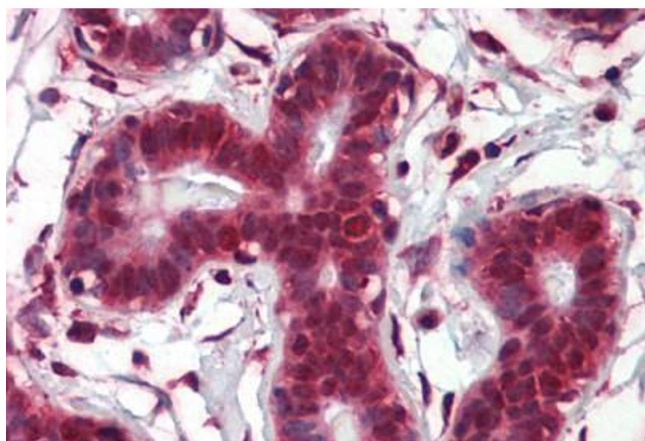
Handling

Format:	Lyophilized
Reconstitution:	Distilled water
Concentration:	Lot specific
Buffer:	Lyophilized from PBS with 2 % sucrose
Handling Advice:	Avoid repeat freeze-thaw cycles.
Storage:	4 °C,-20 °C
Storage Comment:	Long term: -20°C, the use of 50% glycerol is recommended if storing aliquots in -20°C for long

term use (up to 1 year)

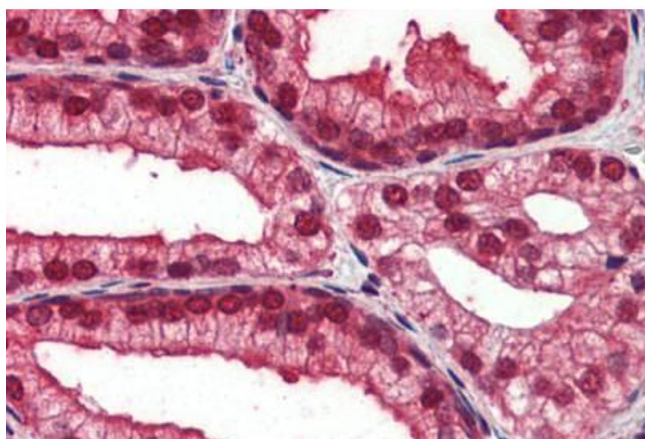
Short term (less than 1 week): 4°C. Avoid freeze-thaw cycles.

Images



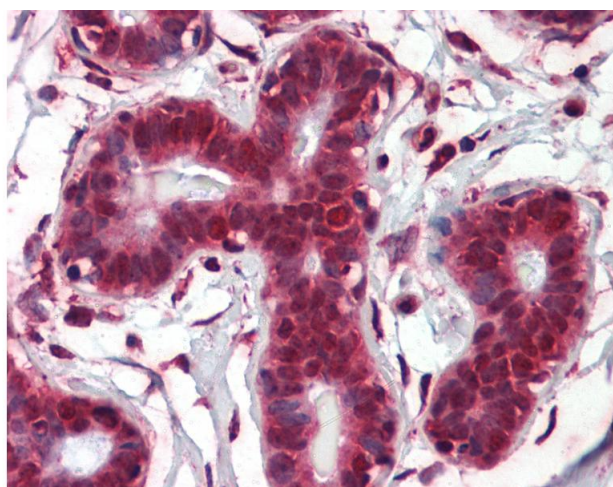
Immunohistochemistry (Paraffin-embedded Sections)

Image 1. Human Breast (formalin-fixed, paraffin-embedded) stained with NOTCH4 antibody ABIN462184 followed by biotinylated goat anti-rabbit IgG secondary antibody ABIN481713, alkaline phosphatase-streptavidin and chromogen.



Immunohistochemistry (Paraffin-embedded Sections)

Image 2. Human Prostate (formalin-fixed, paraffin-embedded) stained with NOTCH4 antibody ABIN462184 followed by biotinylated goat anti-rabbit IgG secondary antibody ABIN481713, alkaline phosphatase-streptavidin and chromogen.



Immunohistochemistry

Image 3. Anti-NOTCH4 antibody IHC of human breast. Immunohistochemistry of formalin-fixed, paraffin-embedded tissue after heat-induced antigen retrieval. Antibody concentration 5 ug/ml. This image was taken for the unconjugated form of this product. Other fo ...