

Datasheet for ABIN6741549
anti-PML antibody (AA 588-637)[Go to Product page](#)

2 Images

Overview

Quantity:	100 µL
Target:	PML
Binding Specificity:	AA 588-637
Reactivity:	Human, Mouse, Rat, Horse, Cow, Guinea Pig
Host:	Rabbit
Clonality:	Polyclonal
Conjugate:	This PML antibody is un-conjugated
Application:	Western Blotting (WB), Immunohistochemistry (IHC), Immunohistochemistry (Paraffin-embedded Sections) (IHC (p))

Product Details

Brand:	IHC-plus™
Immunogen:	Synthetic peptide located between aa588-637 of human PML (P29590). Percent identity by BLAST analysis: Human, Chimpanzee, Gibbon, Monkey, Galago, Mouse, Rat, Elephant, Bovine (100%), Marmoset, Panda, Bat, Rabbit, Pig (92%), Horse, Guinea pig (84%). Type of Immunogen: Synthetic peptide
Isotype:	IgG
Specificity:	Human PML
Predicted Reactivity:	Percent identity by BLAST analysis: Human, Mouse, Rat, Bovine (100%) Pig (92%) Horse, Guinea pig (84%).

Product Details

Purification: Immunoaffinity purified

Target Details

Target: PML

Alternative Name: PML ([PML Products](#))

Background: Name/Gene ID: PML
Family: Transcription factor

Synonyms: PML, PP8675, Promyelocytic leukemia, Protein PML, TRIM19, Promyelocytic leukemia protein, RING finger protein 71, MYL, RNF71

Gene ID: 5371

UniProt: [P29590](#)

Pathways: [p53 Signaling](#), [Retinoic Acid Receptor Signaling Pathway](#), [Maintenance of Protein Location](#), [Positive Regulation of Endopeptidase Activity](#), [Protein targeting to Nucleus](#)

Application Details

Application Notes: Approved: IHC, IHC-P (5 µg/mL), WB

Usage: Immunohistochemistry: This antibody was validated for use in immunohistochemistry on a panel of 21 formalin-fixed, paraffin-embedded (FFPE) human tissues after heat induced antigen retrieval in pH 6.0 citrate buffer. After incubation with the primary antibody, slides were incubated with biotinylated secondary antibody, followed by alkaline phosphatase-streptavidin and chromogen. The stained slides were evaluated by a pathologist to confirm staining specificity. The optimal working concentration for this antibody was determined to be 5 µg/mL. ELISA titer using peptide based assay: 1:312500. Western Blot: Suggested dilution at 1 µg/mL in 5 % skim milk / PBS buffer, and HRP conjugated anti-Rabbit IgG should be diluted in 1:50000 - 100000 as second antibody.

Comment: Target Species of Antibody: Human

Restrictions: For Research Use only

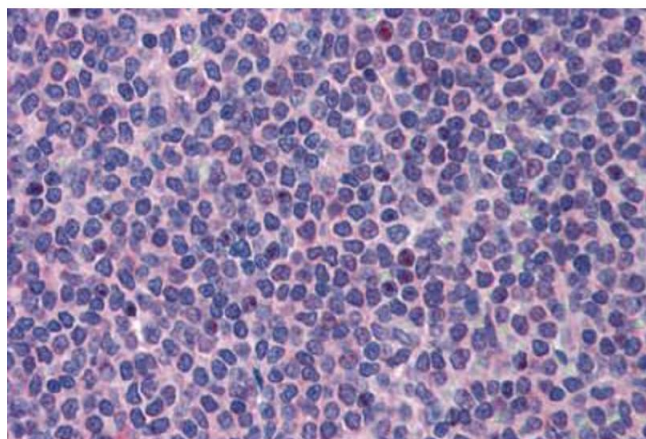
Handling

Format: Lyophilized

Handling

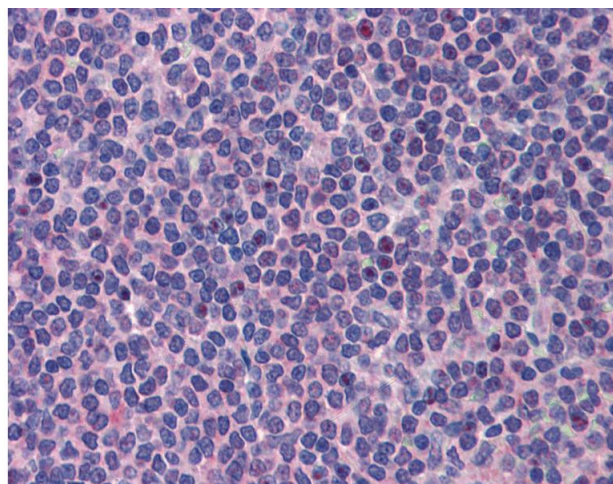
Reconstitution:	Distilled Water.
Concentration:	Lot specific
Buffer:	Lyophilized from PBS with 2 % sucrose
Handling Advice:	Avoid repeat freeze-thaw cycles.
Storage:	4 °C, -20 °C
Storage Comment:	Long term: -20°C, the use of 50% glycerol is recommended if storing aliquots in -20°C for long term use (up to 1 year) Short term (less than 1 week): 4°C. Avoid freeze-thaw cycles.

Images



Immunohistochemistry (Paraffin-embedded Sections)

Image 1. Human Spleen (formalin-fixed, paraffin-embedded) stained with PML antibody ABIN462187 followed by biotinylated goat anti-rabbit IgG secondary antibody ABIN481713, alkaline phosphatase-streptavidin and chromogen.



Immunohistochemistry

Image 2. Anti-PML antibody IHC of human spleen. Immunohistochemistry of formalin-fixed, paraffin-embedded tissue after heat-induced antigen retrieval. Antibody concentration 5 ug/ml. This image was taken for the unconjugated form of this product. Other forms ...