

Datasheet for ABIN6741555
anti-ST18 antibody (AA 899-948)[Go to Product page](#)

2 Images

Overview

Quantity:	100 µL
Target:	ST18 (ZNF387)
Binding Specificity:	AA 899-948
Reactivity:	Human, Mouse, Rabbit, Cow, Guinea Pig, Horse, Pig, Bat, Monkey
Host:	Rabbit
Clonality:	Polyclonal
Conjugate:	This ST18 antibody is un-conjugated
Application:	Western Blotting (WB), Immunohistochemistry (IHC), Immunohistochemistry (Paraffin-embedded Sections) (IHC (p))

Product Details

Brand:	IHC-plus™
Immunogen:	Synthetic peptide located between aa899-948 of human ST18 (O60284, NP_055497). Percent identity by BLAST analysis: Human, Chimpanzee, Gorilla, Gibbon, Monkey, Marmoset, Elephant, Bat, Rabbit, Horse, Pig (100%), Galago, Rat, Dog, Turkey, Zebra finch, Chicken, Platypus (92%), Mouse, Bovine, Opossum, Guinea pig (85%). Type of Immunogen: Synthetic peptide
Isotype:	IgG
Specificity:	Human ST18
Predicted Reactivity:	Percent identity by BLAST analysis: Human, Rabbit, Horse, Pig (100%) Rat, Dog, Chicken (92%)

Product Details

Mouse, Bovine, Guinea pig (85%).

Purification: Immunoaffinity purified

Target Details

Target: ST18 (ZNF387)

Alternative Name: ST18 ([ZNF387 Products](#))

Background: Name/Gene ID: ST18

Synonyms: ST18, KIAA0535, Zinc finger protein 387, ZC2HC10, ZNF387

Gene ID: 9705

NCBI Accession: [NP_055497](#)

UniProt: [O60284](#)

Application Details

Application Notes: Approved: IHC, IHC-P (5 µg/mL), WB (0.2 - 1 µg/mL)

Usage: Immunohistochemistry: This antibody was validated for use in immunohistochemistry on a panel of 21 formalin-fixed, paraffin-embedded (FFPE) human tissues after heat induced antigen retrieval in pH 6.0 citrate buffer. After incubation with the primary antibody, slides were incubated with biotinylated secondary antibody, followed by alkaline phosphatase-streptavidin and chromogen. The stained slides were evaluated by a pathologist to confirm staining specificity. The optimal working concentration for this antibody was determined to be 5 µg/mL. Western Blot: Suggested dilution at 1 µg/mL in 5 % skim milk / PBS buffer, and HRP conjugated anti-Rabbit IgG should be diluted in 1:50000 - 100000 as second antibody. ELISA titer in peptide based assay: 1:312500.

Comment: Target Species of Antibody: Human

Restrictions: For Research Use only

Handling

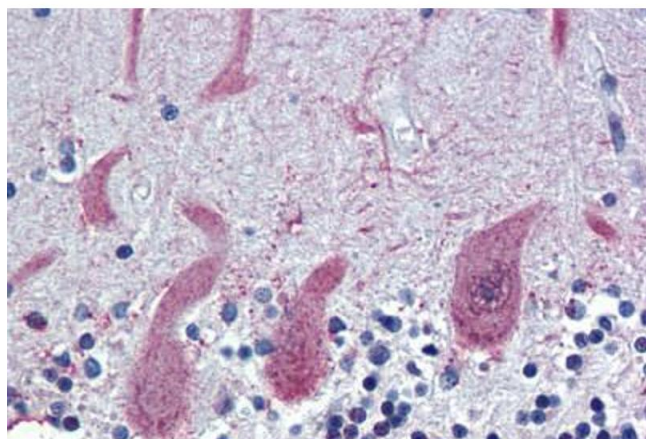
Format: Lyophilized

Reconstitution: Distilled water

Handling

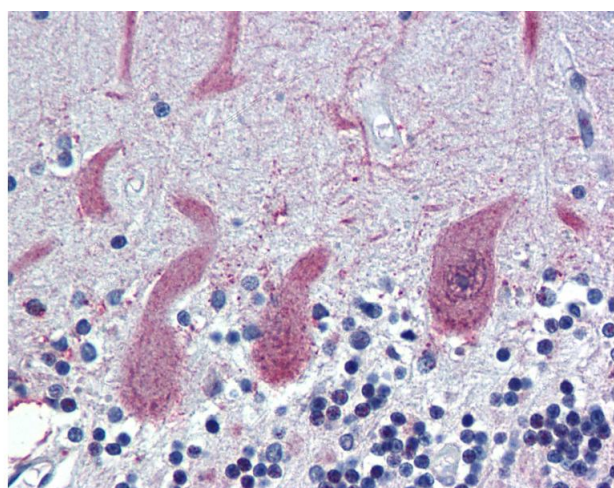
Concentration:	Lot specific
Buffer:	Lyophilized from PBS with 2 % sucrose
Handling Advice:	Avoid repeat freeze-thaw cycles.
Storage:	4 °C,-20 °C
Storage Comment:	Long term: -20°C, the use of 50% glycerol is recommended if storing aliquots in -20°C for long term use (up to 1 year) Short term (less than 1 week): 4°C. Avoid freeze-thaw cycles.

Images



Immunohistochemistry (Paraffin-embedded Sections)

Image 1. Human Brain, Cerebellum (formalin-fixed, paraffin-embedded) stained with ST18 antibody ABIN462193 followed by biotinylated goat anti-rabbit IgG secondary antibody ABIN481713, alkaline phosphatase-streptavidin and chromogen.



Immunohistochemistry

Image 2. Anti-ST18 antibody IHC of human brain, cerebellum. Immunohistochemistry of formalin-fixed, paraffin-embedded tissue after heat-induced antigen retrieval. Antibody concentration 5 ug/ml. This image was taken for the unconjugated form of this product. ...